

DATEC-TERMINAL

Modular plastic enclosures for data collection equipment

DATEC-TERMINAL is a tough and attractive housing system uniquely designed to meet the requirements of desktop and wall mounted data collection equipment.

- ergonomic terminal enclosures
- operating area inclined by 20°
- for desktop or wall mounted systems
- rear lids for mounting of standard pocket-size scanners
- four sizes and two types
- sizes M & L with separate terminal section which is easily accessible
- fast assembly and easy access for components
- hidden screw fixing
- wide range of accessories, functional and flexible to use
- protection class IP 54 in combination with cover and closed lid
- hidden wall mounting with removal prevention
- internal fastening pillars for PCBs 100 x 160 mm or double eurocard sizes (S, SL and L)
- plain surfaces for individual machining and interfaces
- recessed operating area for protecting a membrane keypad



DATEC-TERMINAL

Applications and Examples

- Systems for data collection on the job and machines
- Access and security controls
- Measuring and controlling
- Heating and air-conditioning units
- Medical, wellness
- Point-of-sale devices



Dental Whitening and laser therapy



Device for monitoring and controlling distillation units



RFID access control readers



System for preventing electrostatic charges



Terminal for time recording, access control and order management



Versatile terminal for leisure facilities

Customising Options

What do you still need for your own very personal product? We can supply enclosures and tuning knobs with all necessary modifications for fitting your electronic components.
Customising options for Datec-Terminal



Machining



Lacquering



Printing



Laser marking



Decor foils



Special material



EMC shielding



Installation / Assembly of accessories

DATEC-TERMINAL

Select Versions



B4013117
DATEC-TERMINAL S
ABS (UL 94 HB)
off-white RAL 9002
130x180x86mm
IP 54 opt.



B4016117
DATEC-TERMINAL M, Vers. I
ABS (UL 94 HB)
off-white RAL 9002
168x272x101mm
IP 54 opt.



B4016217
DATEC-TERMINAL M, Vers. II
ABS (UL 94 HB)
off-white RAL 9002
168x272x101mm
IP 54 opt.



B4016317
DATEC-TERMINAL M, Vers. III
ABS (UL 94 HB)
off-white RAL 9002
168x272x101mm
IP 54 opt.



B4026117
DATEC-TERMINAL SL
ABS (UL 94 HB)
off-white RAL 9002
264x180x86mm
IP 54 opt.



B4030117
DATEC-TERMINAL L, Vers. I
ABS (UL 94 HB)
off-white RAL 9002
302x272x101mm
IP 54 opt.

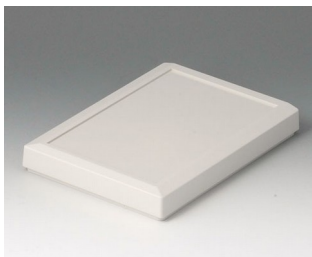


B4030217
DATEC-TERMINAL L, Vers. II
ABS (UL 94 HB)
off-white RAL 9002
302x272x101mm
IP 54 opt.

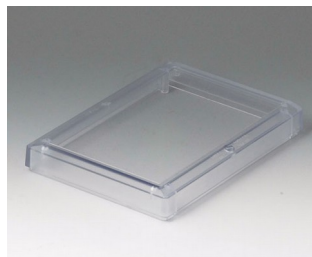


B4030317
DATEC-TERMINAL L, Vers. III
ABS (UL 94 HB)
off-white RAL 9002
302x272x101mm
IP 54 opt.

Accessory to complete



B4013617
Cover S
ABS (UL 94 HB)
off-white RAL 9002
130x180x23mm



B4013621
Cover S
PC (UL 94 V-0)
transparent
130x180x23mm

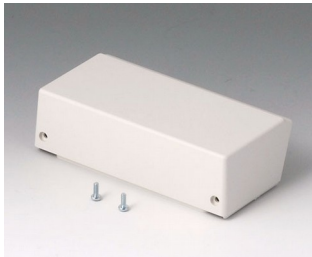


B4013637
Cover S, convex
ABS (UL 94 HB)
off-white RAL 9002
130x180x28mm



B4016417
Lid M closed, flat
ABS (UL 94 HB)
off-white RAL 9002
134x62x24mm

DATEC-TERMINAL



B4016457
Lid M closed, high
ABS (UL 94 HB)
off-white RAL 9002
134x67x38mm



B4016617
Cover M, flat
ABS (UL 94 HB)
off-white RAL 9002
168x220x29mm



B4016621
Cover M, flat
PC (UL 94 V-0)
transparent
168x220x29mm



B4016631
Cover M, convex
PC (UL 94 V-0)
transparent
168x220x29mm



B4016637
Cover M, convex
ABS (UL 94 HB)
off-white RAL 9002
168x220x29mm



B4016657
Cover M, high
ABS (UL 94 HB)
off-white RAL 9002
168x220x50mm



B4016671
Cover strip M / L
PC (UL 94 V-0)
transparent



B4016677
Cover strip M / L
ABS (UL 94 HB)
off-white RAL 9002



B4016917
Lid M with card slot, one piece
ABS (UL 94 HB)
off-white RAL 9002
134x67x38mm



B4026617
Cover SL
ABS (UL 94 HB)
off-white RAL 9002
264x180x23mm



B4026621
Cover SL
PC (UL 94 V-0)
transparent
264x180x23mm



B4026637
Cover SL, convex
ABS (UL 94 HB)
off-white RAL 9002
263x180x28mm



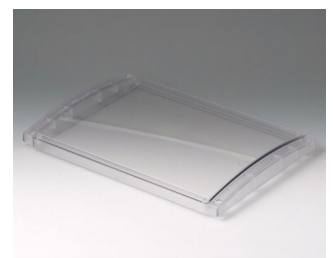
B4030417
Lid L closed, flat
ABS (UL 94 HB)
off-white RAL 9002
268x62x24mm



B4030617
Cover L, flat
ABS (UL 94 HB)
off-white RAL 9002
302x220x29mm



B4030621
Cover L, flat
PC (UL 94 V-0)
transparent
302x220x29mm



B4030631
Cover L, convex
PC (UL 94 V-0)
transparent
302x220x29mm

DATEC-TERMINAL



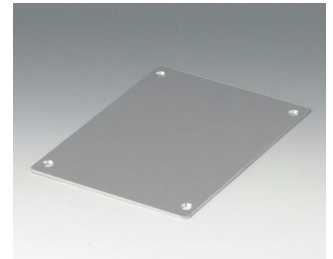
B4030637
Cover L, convex
ABS (UL 94 HB)
off-white RAL 9002
302x220x29mm



B4030657
Cover L, high
ABS (UL 94 HB)
off-white RAL 9002
302x220x50mm



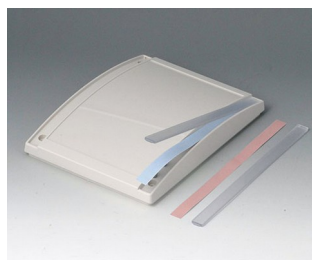
B4030917
Lid L with card slot, one piece
ABS (UL 94 HB)
off-white RAL 9002
268x67x38mm



B4113106
Front panel S
Aluminium
matt anodised
125.9x176x2mm



B4113126
Profile plate S
Aluminium
matt anodised
130x180x8mm



B4113671
Cover strip S / SL
PC (UL 94 V-0)
transparent



B4113677
Cover strip S / SL
ABS (UL 94 HB)
off-white RAL 9002



B4116106
Front panel MS
Aluminium
matt anodised
165.4x217.4x2mm



B4116116
Front panel MH
Aluminium
matt anodised
128x209x2mm



B4116126
Profile plate M
Aluminium
matt anodised
168x220x8mm



B4126106
Front panel SL
Aluminium
matt anodised
259.4x176x2mm



B4126126
Profile plate SL
Aluminium
matt anodised
263x180x8mm



B4130106
Front panel LS
Aluminium
matt anodised
299.4x217.4x2mm



B4130116
Front panel LH
Aluminium
matt anodised
262x209x2mm



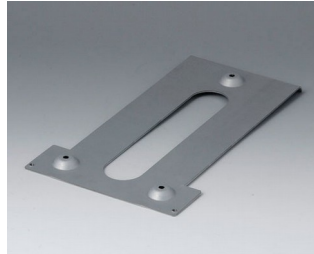
B4130126
Profile plate L
Aluminium
matt anodised
302x220x8mm

DATEC-TERMINAL

Accessory "wall/holder"



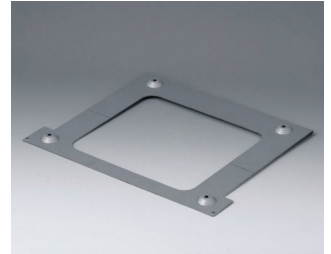
B4113147
Wall suspension element S
Steel
galvanized
79x137x8mm



B4116147
Wall suspension element M
Steel
galvanized
214x126x12mm

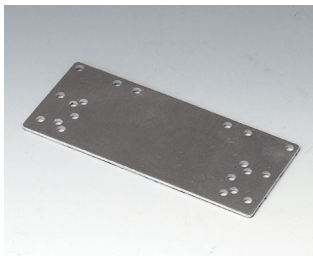


B4126147
Wall suspension element SL
Steel
galvanized
210x137x8mm



B4130147
Wall suspension element L
Steel
galvanized
214x260x12mm

Accessory



B4116136
Support plate L and M
Aluminium
matt anodised
102x45x1mm

Subject to technical modification without notice. © by OKW Gehäusesysteme, Buchen/Germany.