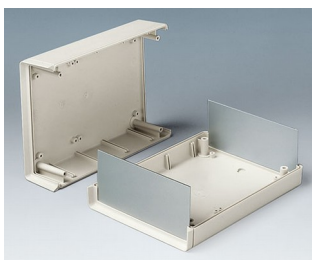
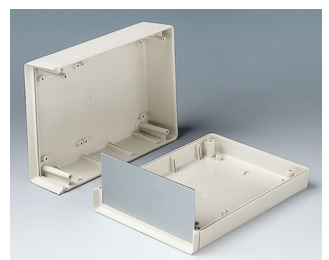
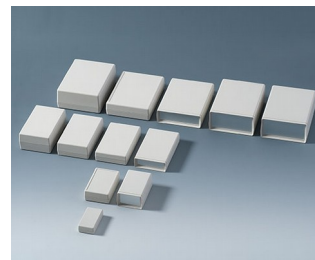


# SHELL-TYPE CASES

## Universal instrument enclosures

Our comprehensive SHELL-TYPE CASE range of plastic enclosures available in different sizes, heights and types. Simply choose the case that meets your individual requirements!

- fifty one models in three different types:  
**type V** – with open front for a panel (acc.)  
**type O** – with open front and rear for panels (acc.)  
**type G** – with closed front and rear
- robust construction with tongue and groove
- internal guide ridges for vertical mounting of partitions and PCBs
- internal screw pillars for PCBs etc.
- front and rear panels in aluminium or PMMA red (plexiglas®) available as accessories
- versions with battery compartment for 2 x AA, 4 x AA, 1 x 9 V or 2 x 9 V cells (types V and G)
- closed version (type G) also available with recessed top
- protection class IP 65 for closed versions (type G) without battery compartment when using the sealing kit (accessory)
- EMC: on request the SHELL-TYPE CASES are also available with aluminium metalisation; aluminium contact strips (accessories) provide additional electrical continuity between the top and base shells of the shielded cases
- wall mounting brackets and wall suspension elements as accessories
- additional functions with universal accessories



# SHELL-TYPE CASES

## Applications and Examples

- Measuring and control technology
- Medical, wellness and laboratory technology
- Peripheral devices and interfaces, switchboxes etc.



Magnetic metal detector



System for leak detection in  
leisure vehicles



Teleservice Gateway MGW/865

## Customising Options

What do you still need for your own very personal product? We can supply enclosures and tuning knobs with all necessary modifications for fitting your electronic components.

Customising options for Shell-Type Cases



Machining



Lacquering



Printing



Laser marking



Decor foils



Special material



EMC shielding



Installation / Assembly  
of accessories

# SHELL-TYPE CASES

## Select Versions



**A9404331**  
SHELL-TYPE CASES G 85,  
Vers. I  
ABS (UL 94 HB)  
off-white RAL 9002  
45x85x22mm  
IP 65 opt.



**A9404333**  
SHELL-TYPE CASES V 85,  
Vers. I  
ABS (UL 94 HB)  
off-white RAL 9002  
45x85x22mm



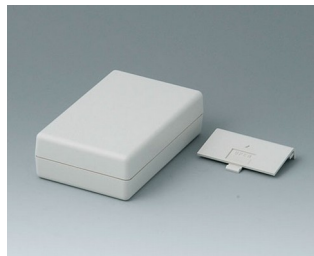
**A9404341**  
SHELL-TYPE CASES G 85,  
Vers. I  
ABS (UL 94 HB)  
off-white RAL 9002  
45x85x33mm  
IP 65 opt.



**A9404441**  
SHELL-TYPE CASES G 85,  
Vers. I  
ABS (UL 94 HB)  
off-white RAL 9002  
45x85x45mm  
IP 65 opt.



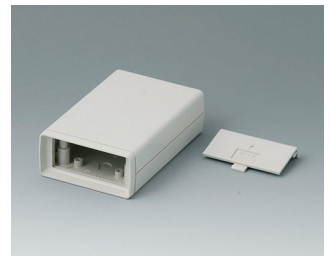
**A9406331**  
SHELL-TYPE CASES G 110,  
Vers. I  
ABS (UL 94 HB)  
off-white RAL 9002  
72x114x33mm  
IP 65 opt.



**A9406332**  
SHELL-TYPE CASES G 110,  
Vers. II  
ABS (UL 94 HB)  
off-white RAL 9002  
72x114x33mm



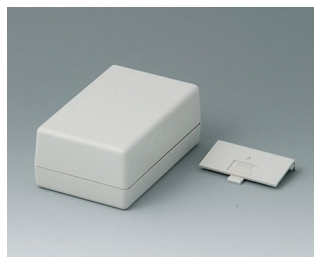
**A9406333**  
SHELL-TYPE CASES V 110,  
Vers. I  
ABS (UL 94 HB)  
off-white RAL 9002  
72x114x33mm



**A9406334**  
SHELL-TYPE CASES V 110,  
Vers. II  
ABS (UL 94 HB)  
off-white RAL 9002  
72x114x33mm



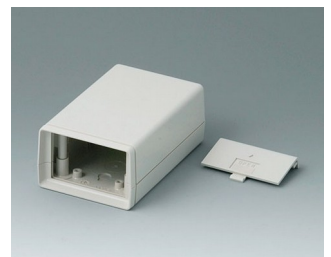
**A9406341**  
SHELL-TYPE CASES G 110,  
Vers. I  
ABS (UL 94 HB)  
off-white RAL 9002  
72x114x45mm  
IP 65 opt.



**A9406342**  
SHELL-TYPE CASES G 110,  
Vers. II  
ABS (UL 94 HB)  
off-white RAL 9002  
72x114x45mm



**A9406343**  
SHELL-TYPE CASES V 110,  
Vers. I  
ABS (UL 94 HB)  
off-white RAL 9002  
72x114x45mm

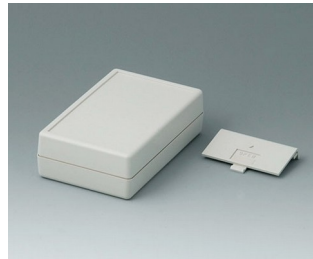


**A9406344**  
SHELL-TYPE CASES V 110,  
Vers. II  
ABS (UL 94 HB)  
off-white RAL 9002  
72x114x45mm

# SHELL-TYPE CASES



**A9406351**  
SHELL-TYPE CASES G 110,  
Vers. I  
ABS (UL 94 HB)  
off-white RAL 9002  
72x114x33.5mm  
IP 65 opt.



**A9406352**  
SHELL-TYPE CASES G 110,  
Vers. II  
ABS (UL 94 HB)  
off-white RAL 9002  
72x114x33.5mm



**A9406441**  
SHELL-TYPE CASES G 110,  
Vers. I  
ABS (UL 94 HB)  
off-white RAL 9002  
72x114x57mm  
IP 65 opt.



**A9406443**  
SHELL-TYPE CASES V 110,  
Vers. I  
ABS (UL 94 HB)  
off-white RAL 9002  
72x114x57mm



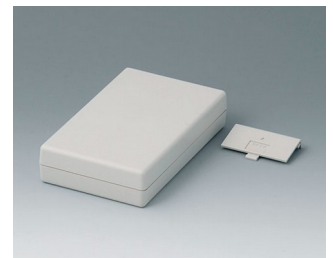
**A9408330**  
SHELL-TYPE CASES O 155,  
Vers. I  
ABS (UL 94 HB)  
off-white RAL 9002  
95x158x33mm



**A9408331**  
SHELL-TYPE CASES G 155,  
Vers. I  
ABS (UL 94 HB)  
off-white RAL 9002  
95x158x33mm  
IP 65 opt.



**A9408333**  
SHELL-TYPE CASES V 155,  
Vers. I  
ABS (UL 94 HB)  
off-white RAL 9002  
95x158x33mm



**A9408335**  
SHELL-TYPE CASES G 155,  
Vers. IV  
ABS (UL 94 HB)  
off-white RAL 9002  
95x158x33mm



**A9408336**  
SHELL-TYPE CASES V 155,  
Vers. IV  
ABS (UL 94 HB)  
off-white RAL 9002  
95x158x33mm



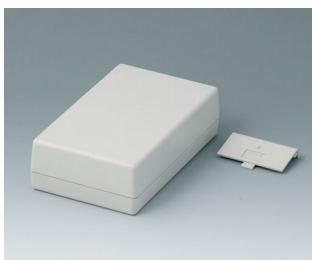
**A9408340**  
SHELL-TYPE CASES O 155,  
Vers. I  
ABS (UL 94 HB)  
off-white RAL 9002  
95x158x45mm



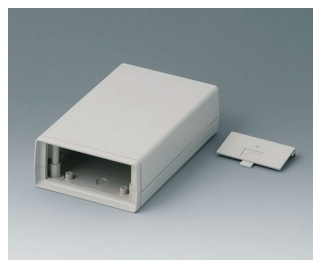
**A9408341**  
SHELL-TYPE CASES G 155,  
Vers. I  
ABS (UL 94 HB)  
off-white RAL 9002  
95x158x45mm  
IP 65 opt.



**A9408343**  
SHELL-TYPE CASES V 155,  
Vers. I  
ABS (UL 94 HB)  
off-white RAL 9002  
95x158x45mm



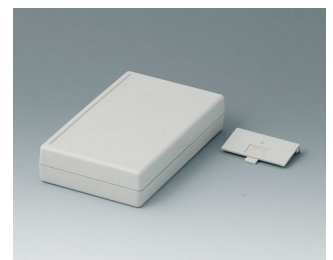
**A9408345**  
SHELL-TYPE CASES G 155,  
Vers. IV  
ABS (UL 94 HB)  
off-white RAL 9002  
95x158x45mm



**A9408346**  
SHELL-TYPE CASES V 155,  
Vers. IV  
ABS (UL 94 HB)  
off-white RAL 9002  
95x158x45mm



**A9408351**  
SHELL-TYPE CASES G 155,  
Vers. I  
ABS (UL 94 HB)  
off-white RAL 9002  
95x158x33.5mm  
IP 65 opt.



**A9408355**  
SHELL-TYPE CASES G 155,  
Vers. IV  
ABS (UL 94 HB)  
off-white RAL 9002  
95x158x33.5mm



# SHELL-TYPE CASES



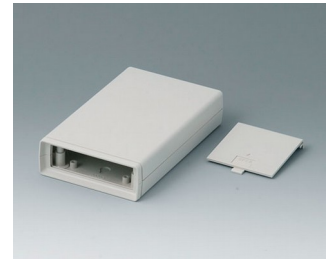
**A9408440**  
SHELL-TYPE CASES O 155,  
Vers. I  
ABS (UL 94 HB)  
off-white RAL 9002  
95x155x57mm



**A9408441**  
SHELL-TYPE CASES G 155,  
Vers. I  
ABS (UL 94 HB)  
off-white RAL 9002  
95x158x57mm  
IP 65 opt.



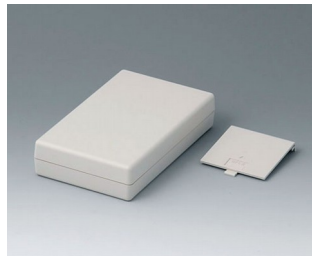
**A9408443**  
SHELL-TYPE CASES V 155,  
Vers. I  
ABS (UL 94 HB)  
off-white RAL 9002  
95x158x57mm



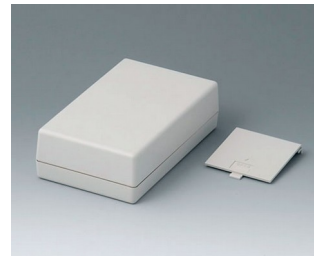
**A9408638**  
SHELL-TYPE CASES V 155,  
Vers. V  
ABS (UL 94 HB)  
off-white RAL 9002  
95x158x33mm



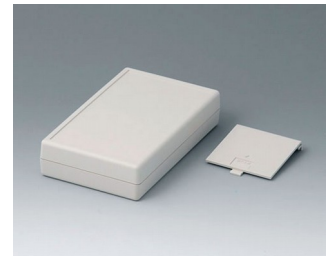
**A9408648**  
SHELL-TYPE CASES V 155,  
Vers. V  
ABS (UL 94 HB)  
off-white RAL 9002  
95x158x45mm



**A9408737**  
SHELL-TYPE CASES G 155,  
Vers. V  
ABS (UL 94 HB)  
off-white RAL 9002  
95x158x33mm



**A9408747**  
SHELL-TYPE CASES G 155,  
Vers. V  
ABS (UL 94 HB)  
off-white RAL 9002  
95x158x45mm



**A9408757**  
SHELL-TYPE CASES G 155,  
Vers. V  
ABS (UL 94 HB)  
off-white RAL 9002  
95x158x33.5mm



**A9413330**  
SHELL-TYPE CASES O 190,  
Vers. I  
ABS (UL 94 HB)  
off-white RAL 9002  
138x190x45mm



**A9413331**  
SHELL-TYPE CASES G 190,  
Vers. I  
ABS (UL 94 HB)  
off-white RAL 9002  
138x190x45mm  
IP 65 opt.



**A9413333**  
SHELL-TYPE CASES V 190,  
Vers. I  
ABS (UL 94 HB)  
off-white RAL 9002  
138x190x45mm



**A9413340**  
SHELL-TYPE CASES O 190,  
Vers. I  
ABS (UL 94 HB)  
off-white RAL 9002  
138x190x68mm



**A9413341**  
SHELL-TYPE CASES G 190,  
Vers. I  
ABS (UL 94 HB)  
off-white RAL 9002  
138x190x68mm  
IP 65 opt.



**A9413343**  
SHELL-TYPE CASES V 190,  
Vers. I  
ABS (UL 94 HB)  
off-white RAL 9002  
138x190x68mm



**A9413351**  
SHELL-TYPE CASES G 190,  
Vers. I  
ABS (UL 94 HB)  
off-white RAL 9002  
138x190x45.5mm  
IP 65 opt.



**A9413440**  
SHELL-TYPE CASES O 190,  
Vers. I  
ABS (UL 94 HB)  
off-white RAL 9002  
138x190x91mm

# SHELL-TYPE CASES



**A9413441**  
SHELL-TYPE CASES G 190,  
Vers. I  
ABS (UL 94 HB)  
off-white RAL 9002  
138x190x91mm  
IP 65 opt.



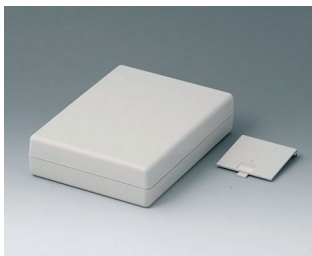
**A9413443**  
SHELL-TYPE CASES V 190,  
Vers. I  
ABS (UL 94 HB)  
off-white RAL 9002  
138x190x91mm



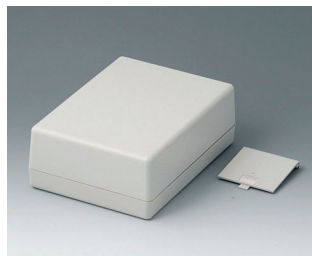
**A9413638**  
SHELL-TYPE CASES V 190,  
Vers. V  
ABS (UL 94 HB)  
off-white RAL 9002  
138x190x45mm



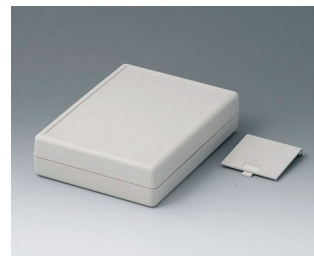
**A9413648**  
SHELL-TYPE CASES V 190,  
Vers. V  
ABS (UL 94 HB)  
off-white RAL 9002  
138x190x68mm



**A9413737**  
SHELL-TYPE CASES G 190,  
Vers. V  
ABS (UL 94 HB)  
off-white RAL 9002  
138x190x45mm

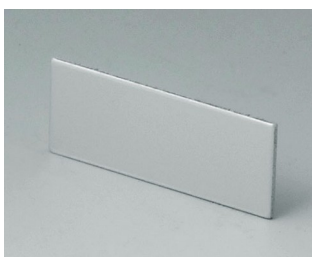


**A9413747**  
SHELL-TYPE CASES G 190,  
Vers. V  
ABS (UL 94 HB)  
off-white RAL 9002  
138x190x68mm

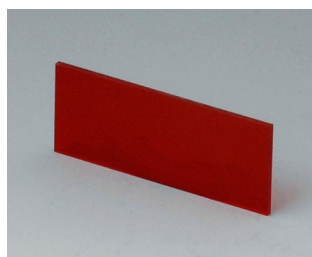


**A9413757**  
SHELL-TYPE CASES G 190,  
Vers. V  
ABS (UL 94 HB)  
off-white RAL 9002  
138x190x45.5mm

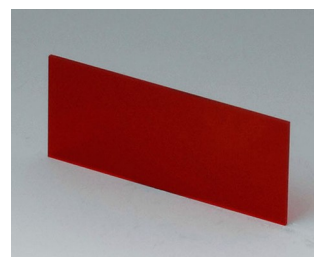
## Accessory to complete



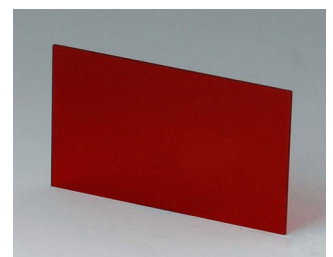
**A9104111**  
Front / rear panel V 85  
Aluminium  
matt anodised  
36x14.6x1mm



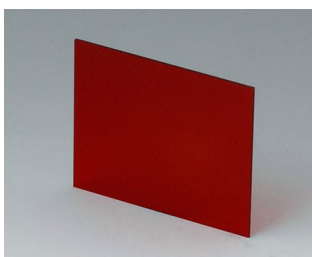
**A9104113**  
Front / rear panel V 85  
Acrylic glass  
red transparent  
36x14.6x1mm



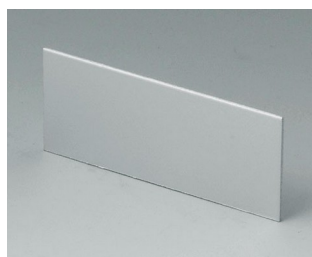
**A9106113**  
Front / rear panel V 110  
Acrylic glass  
red transparent  
59.3x25x1mm



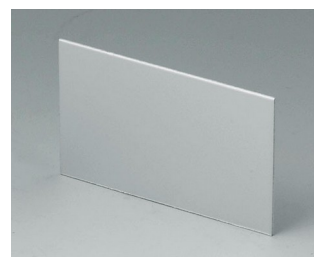
**A9106123**  
Front / rear panel V 110  
Acrylic glass  
red transparent  
59.3x37x1mm



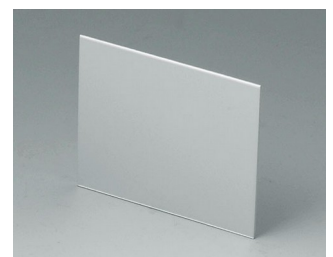
**A9106223**  
Front / rear panel V 110  
Acrylic glass  
red transparent  
59.3x49x1mm



**A9107111**  
Front / rear panel V 110  
Aluminium  
matt anodised  
59.3x25x1mm

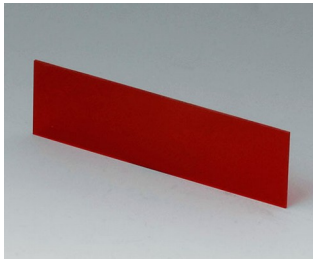


**A9107121**  
Front / rear panel V 110  
Aluminium  
matt anodised  
59.3x37x1mm

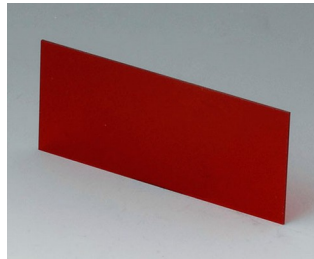


**A9107221**  
Front / rear panel V 110  
Aluminium  
matt anodised  
59.3x49x1mm

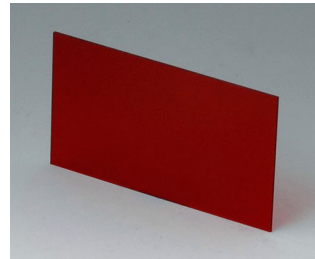
# SHELL-TYPE CASES



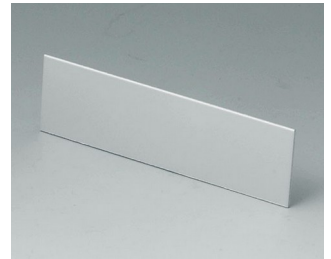
**A9108113**  
Front / rear panel V, O 155  
Acrylic glass  
red transparent  
81.9x23.6x1mm



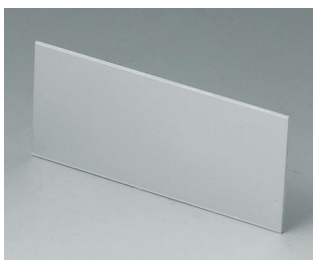
**A9108123**  
Front / rear panel V, O 155  
Acrylic glass  
red transparent  
81.9x35.6x1mm



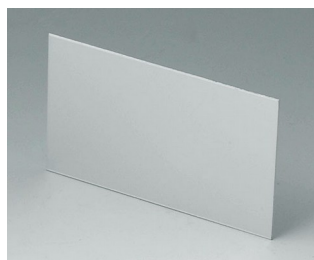
**A9108223**  
Front / rear panel V, O 155  
Acrylic glass  
red transparent  
81.9x47.6x1mm



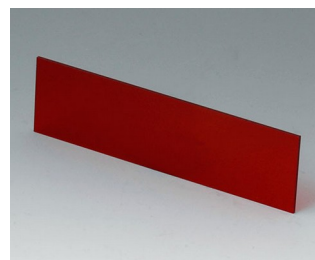
**A9109111**  
Front / rear panel V, O 155  
Aluminium  
matt anodised  
81.9x23.6x1mm



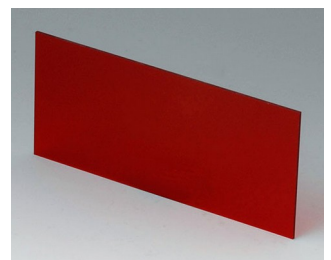
**A9109121**  
Front / rear panel V, O 155  
Aluminium  
matt anodised  
81.9x35.6x1mm



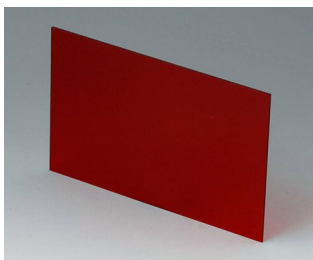
**A9109221**  
Front / rear panel V, O 155  
Aluminium  
matt anodised  
81.9x47.6x1mm



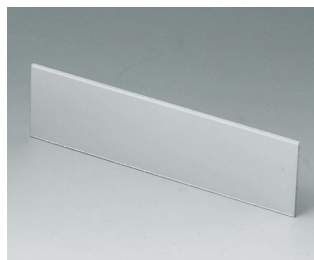
**A9113113**  
Front / rear panel V, O 190  
Acrylic glass  
red transparent  
124.2x33.6x1.5mm



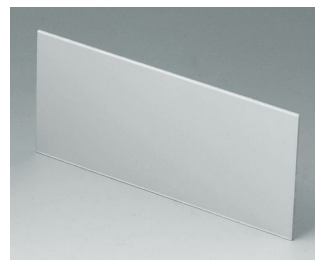
**A9113123**  
Front / rear panel V, O 190  
Acrylic glass  
red transparent  
124.2x56.6x1.5mm



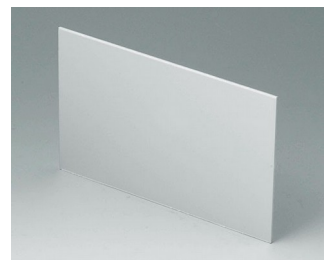
**A9113223**  
Front / rear panel V, O 190  
Acrylic glass  
red transparent  
124.2x79.6x1.5mm



**A9114111**  
Front / rear panel V, O 190  
Aluminium  
matt anodised  
124.2x33.6x1.5mm

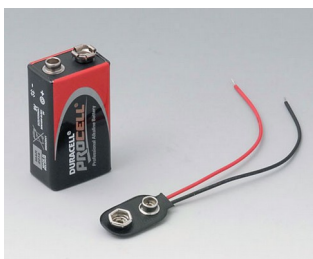


**A9114121**  
Front / rear panel V, O 190  
Aluminium  
matt anodised  
124.2x56.6x1.5mm



**A9114221**  
Front / rear panel V, O 190  
Aluminium  
matt anodised  
124.2x79.6x1.5mm

## Accessory "battery"



**A9160003**  
Plug-in contact, 1 x 9 V (PP3)



**A9190013**  
Set of battery clips, 4 x AA  
Steel  
nickel-plated



**A9190014**  
Set of battery clips, 2 x AA  
Steel  
nickel-plated

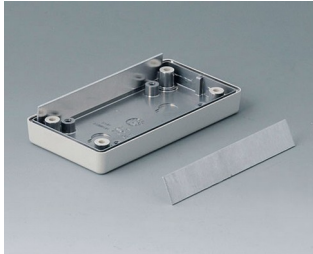


**A9250250**  
Battery spacer  
PE foam  
50x25x4mm

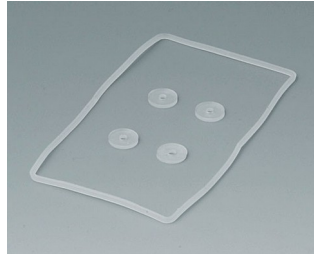


# SHELL-TYPE CASES

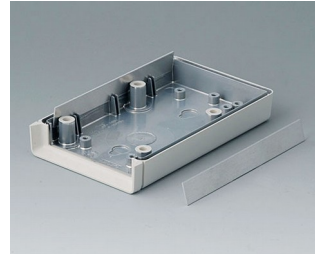
## Accessory "protection"



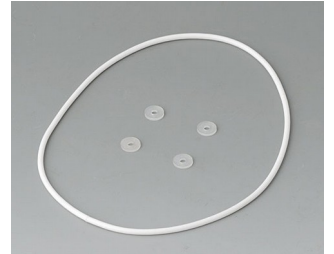
**A9104073**  
Contact-strips V, G 85  
Aluminium



**A9104250**  
Sealing kit G 85



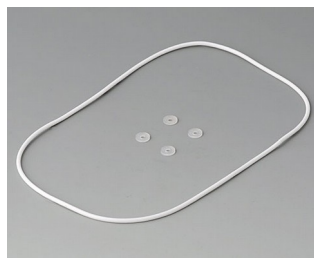
**A9106095**  
Contact-strips V, G 110  
Aluminium



**A9106352**  
Sealing kit G 110



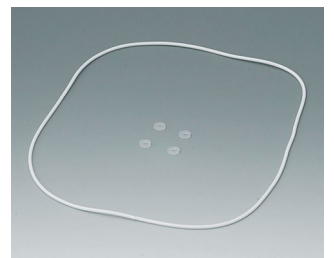
**A9108120**  
Contact-strips V, O, G 155  
Aluminium



**A9108486**  
Sealing kit G 155



**A9113150**  
Contact-strips V, O, G 190  
Aluminium

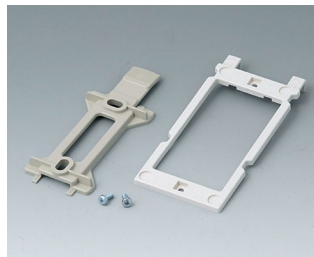


**A9113630**  
Sealing kit G 190

## Accessory "wall/holder"



**A9204108**  
Wall mounting brackets  
PA 6  
pebble grey RAL 7032



**B1350048**  
Wall suspension elements  
ABS (UL 94 HB)  
pebble grey RAL 7032



**B1360048**  
Wall suspension elements  
ABS (UL 94 HB)  
pebble grey RAL 7032

## Accessory "carrying"



**A9100001**  
Ring eyelet  
PA 6  
volcano



**A9100002**  
Ring eyelet  
PA 6  
volcano



**A9172107**  
Belt/Pocket clip  
ABS (UL 94 HB)  
off-white RAL 9002  
62x30mm



# SHELL-TYPE CASES

## Accessory "screws"



**A0306031**  
Self-tapping screws 3 x 6 mm  
(PZ1)

## Accessory



**A9207150**  
Anti-slide feet 6.5 x 2 mm  
transparent



**A9210290**  
Anti-slide feet 9.5 x 3.8 mm  
transparent



**A9250807**  
Tilt foot bar  
ABS (UL 94 HB)  
off-white RAL 9002



**A9250817**  
Tilt foot bar  
ABS (UL 94 HB)  
off-white RAL 9002

Subject to technical modification without notice. © by OKW Gehäusesysteme, Buchen/Germany.