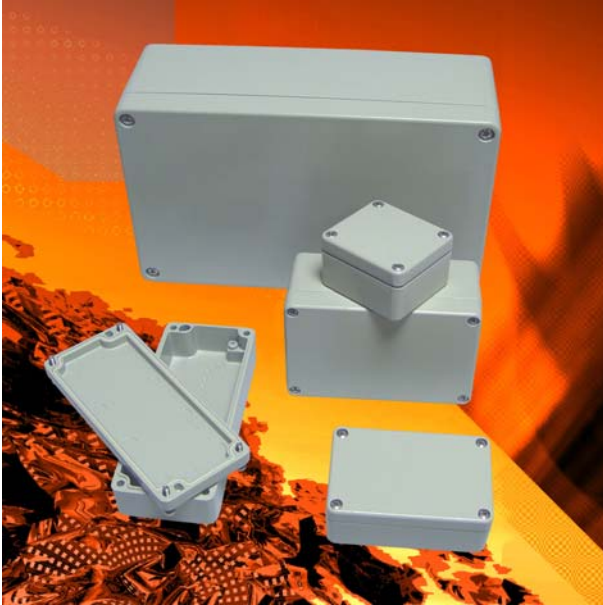


# News Release

Release No: R2006.04

## Extended Range of IP 66 Die-cast Aluminium Enclosures



ROLEC has extended its 'aluKOM' series of die-cast aluminium enclosures. These versatile, tough and economic enclosures are suitable for housing a very wide range of electrical equipment. Typical applications will include machine and process control equipment, switch boxes, terminal boxes and safety equipment etc.

The 'aluKOM' range is manufactured from die-cast aluminium to DIN 1725. The standard models are powder painted in silky grey, RAL 7032. A wide variety of alternative colours can also be supplied on demand to suit different applications.

The extended 'aluKOM' range consists of twenty four industry standard sizes with external dimensions from 50 x 45 x 30 mm to 600 x 310 x 110 mm. The lid is secured to the base with captured corrosion proof stainless steel fixing screws. All models are rated to IP 66 protection class. EMC versions, fitted with a special conductive gasket, can also be provided.

The design of the 'aluKOM' series is ideally suited to modification with mounting holes for cable glands, interconnections, switches and display modules. Threaded screw bosses are provided on the inside of the lid and base for mounting assemblies and

PCBs. An earth terminal is also provided in both parts. Accessories include external mounting brackets, mounting plates, lid hinges, DIN-Rails and cable glands.

ROLEC can supply the 'aluKOM' enclosures with additional holes for push-buttons, connectors and cable glands etc., plus silk-screen printed legends and logos. The cases can also be supplied pre-fitted with DIN-Rails and terminals. Standard prices start at £5.

More information on these enclosures can be found on OKW's website at:  
**[www.rolec-enclosures.co.uk/alukom](http://www.rolec-enclosures.co.uk/alukom)**

**Release No: R2006.04 Ends (word count 259)**

Contact: Robert Cox

E-mail: robertc@okw.co.uk