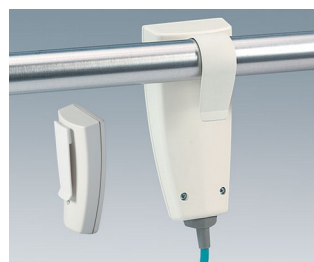
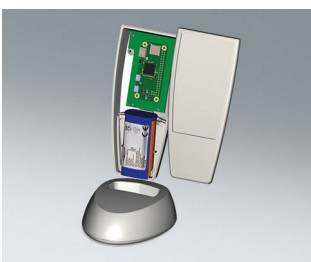


# SMART-CASE

## Contoured handheld enclosures – great to hold

The idea of giving greater expression to ergonomic requirements was the starting point in the development of our SMART-CASE plastic enclosures.

- ergonomic design for maximum user comfort
- ideal for remote control devices connected via cable or powered by batteries: AAA, AA, 9 V or 12 V round cell
- versions with pre-fitted cable glands (sizes M, L and XL)
- recessed operating area for protecting the membrane keypad or decorative foil/label
- ABS (UL 94 HB); SMART-CASES also available in infra-red light-permeable PMMA plexiglas
- protection class up to IP 65: sizes L and XL with optional sealing kit and without battery compartment
- suitable clip and support for secure deposit as accessories
- station M, L & XL for desk-top applications
- internal fastening pillars and fixing supports for PCBs and components
- 4 enclosure sizes



# SMART-CASE

## Applications and Examples

Many different types of remote control systems. Mobile USB solutions. Specially made for the medical and social fields as well as in the household and in industry.



BIOFIT test unit for eye frequency



Chlorophyll fluorimeter for plant screening



Controlling treatment beds



Infrared hand transmitter for sunscreening curtains



Laser distance measuring device



Leak locator



Nurse presence and staff alert



Remote trainer for dog training



Sleep screening system



System for digital respiratory sound analysis



System for leak detection in leisure vehicles

## Customising Options

What do you still need for your own very personal product? We can supply enclosures and tuning knobs with all necessary modifications for fitting your electronic components. Customising options for Smart-Case

# SMART-CASE



Machining



Lacquering



Printing



Laser marking



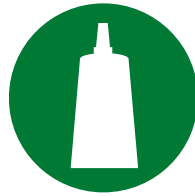
Decor foils



Special material



EMC shielding



Installation / Assembly  
of accessories

## Select Versions



**A9064107**  
SMART-CASE XS  
ABS (UL 94 HB)  
off-white RAL 9002  
58x35.6x19mm  
IP 40



**A9064109**  
SMART-CASE XS  
ABS (UL 94 HB)  
black RAL 9005  
58x35.6x19mm  
IP 40



**A9064209**  
SMART-CASE XS  
PMMA (IR) (UL 94 HB)  
black RAL 9005  
58x35.6x19mm  
IP 40



**A9066107**  
SMART-CASE M, Vers. I  
ABS (UL 94 HB)  
off-white RAL 9002  
96x47x24mm  
IP 40



**A9066109**  
SMART-CASE M, Vers. I  
ABS (UL 94 HB)  
black RAL 9005  
96x47x24mm  
IP 40



**A9066117**  
SMART-CASE M, Vers. II  
ABS (UL 94 HB)  
off-white RAL 9002  
96x47x24mm  
IP 40



**A9066119**  
SMART-CASE M, Vers. II  
ABS (UL 94 HB)  
black RAL 9005  
96x47x24mm  
IP 40



**A9066127**  
SMART-CASE M, Vers. III  
ABS (UL 94 HB)  
off-white RAL 9002  
96x47x24mm  
IP 40

# SMART-CASE



**A9066129**  
 SMART-CASE M, Vers. III  
 ABS (UL 94 HB)  
 black RAL 9005  
 96x47x24mm  
 IP 40



**A9066137**  
 SMART-CASE M, Vers. IV  
 ABS (UL 94 HB)  
 off-white RAL 9002  
 96x47x24mm  
 IP 40



**A9066139**  
 SMART-CASE M, Vers. IV  
 ABS (UL 94 HB)  
 black RAL 9005  
 96x47x24mm  
 IP 40



**A9066147**  
 SMART-CASE M, Vers. V  
 ABS (UL 94 HB)  
 off-white RAL 9002  
 96x47x24mm  
 IP 40



**A9066149**  
 SMART-CASE M, Vers. V  
 ABS (UL 94 HB)  
 black RAL 9005  
 96x47x24mm  
 IP 40



**A9066209**  
 SMART CASE M, Vers. I  
 PMMA (IR) (UL 94 HB)  
 black RAL 9005  
 96x47x24mm  
 IP 40



**A9066219**  
 SMART-CASE M, Vers. II  
 PMMA (IR) (UL 94 HB)  
 black RAL 9005  
 96x47x24mm  
 IP 40



**A9066317**  
 SMART-CASE M, Vers. VI  
 ABS (UL 94 HB)  
 off-white RAL 9002  
 96x47x24mm  
 IP 40



**A9066319**  
 SMART-CASE M, Vers. VI  
 ABS (UL 94 HB)  
 black RAL 9005  
 96x47x24mm  
 IP 40



**A9066329**  
 SMART-CASE M, Vers. III  
 ABS (UL 94 HB)  
 black RAL 9005  
 96x47x24mm  
 IP 40



**A9066339**  
 SMART-CASE M, Vers. IV  
 ABS (UL 94 HB)  
 black RAL 9005  
 96x47x24mm  
 IP 40



**A9066349**  
 SMART-CASE M, Vers. V  
 ABS (UL 94 HB)  
 black RAL 9005  
 96x47x24mm  
 IP 40



**A9066419**  
 SMART-CASE M, Vers. VI  
 PMMA (IR) (UL 94 HB)  
 black RAL 9005  
 96x47x24mm  
 IP 40



**A9067107**  
 SMART-CASE L, Vers. I  
 ABS (UL 94 HB)  
 off-white RAL 9002  
 140x62.7x30.5mm  
 IP 40



**A9067109**  
 SMART-CASE L, Vers. I  
 ABS (UL 94 HB)  
 black RAL 9005  
 140x62.7x30.5mm  
 IP 40



**A9067117**  
 SMART-CASE L, Vers. II  
 ABS (UL 94 HB)  
 off-white RAL 9002  
 140x62.7x30.5mm  
 IP 65 opt., IP 40

# SMART-CASE



**A9067119**  
SMART-CASE L, Vers. II  
ABS (UL 94 HB)  
black RAL 9005  
140x62.7x30.5mm  
IP 65 opt., IP 40



**A9067127**  
SMART-CASE L, Vers. III  
ABS (UL 94 HB)  
off-white RAL 9002  
140x62.7x30.5mm  
IP 65 opt., IP 40



**A9067129**  
SMART-CASE L, Vers. III  
ABS (UL 94 HB)  
black RAL 9005  
140x62.7x30.5mm  
IP 65 opt., IP 40



**A9067137**  
SMART-CASE L, Vers. IV  
ABS (UL 94 HB)  
off-white RAL 9002  
140x62.7x30.5mm  
IP 65 opt., IP 40



**A9067139**  
SMART-CASE L, Vers. IV  
ABS (UL 94 HB)  
black RAL 9005  
140x62.7x30.5mm  
IP 65 opt., IP 40



**A9067147**  
SMART-CASE L, Vers. V  
ABS (UL 94 HB)  
off-white RAL 9002  
140x62.7x30.5mm  
IP 65 opt., IP 40



**A9067149**  
SMART-CASE L, Vers. V  
ABS (UL 94 HB)  
black RAL 9005  
140x62.7x30.5mm  
IP 65 opt., IP 40



**A9067209**  
SMART-CASE L, Vers. I  
PMMA (IR) (UL 94 HB)  
black RAL 9005  
140x62.7x30.5mm  
IP 40



**A9067219**  
SMART-CASE L, Vers. II  
PMMA (IR) (UL 94 HB)  
black RAL 9005  
140x62.7x30.5mm  
IP 65 opt., IP 40



**A9067329**  
SMART-CASE L, Vers. III  
ABS (UL 94 HB)  
black RAL 9005  
140x62.7x30.5mm  
IP 65 opt., IP 40



**A9067339**  
SMART-CASE L, Vers. IV  
ABS (UL 94 HB)  
black RAL 9005  
140x62.7x30.5mm  
IP 65 opt., IP 40



**A9067349**  
SMART-CASE L, Vers. V  
ABS (UL 94 HB)  
black RAL 9005  
140x62.7x30.5mm  
IP 65 opt., IP 40



**A9068107**  
SMART-CASE XL, Vers. I  
ABS (UL 94 HB)  
off-white RAL 9002  
168x74.4x35.4mm  
IP 40



**A9068109**  
SMART-CASE XL, Vers. I  
ABS (UL 94 HB)  
black RAL 9005  
168x74.4x35.4mm  
IP 40



**A9068117**  
SMART-CASE XL, Vers. II  
ABS (UL 94 HB)  
off-white RAL 9002  
168x74.4x35.4mm  
IP 65 opt., IP 40



**A9068119**  
SMART-CASE XL, Vers. II  
ABS (UL 94 HB)  
black RAL 9005  
168x74.4x35.4mm  
IP 65 opt., IP 40

# SMART-CASE



**A9068127**  
SMART-CASE XL, Vers. III  
ABS (UL 94 HB)  
off-white RAL 9002  
168x74.4x35.4mm  
IP 65 opt., IP 40



**A9068129**  
SMART-CASE XL, Vers. III  
ABS (UL 94 HB)  
black RAL 9005  
168x74.4x35.4mm  
IP 65 opt., IP 40



**A9068137**  
SMART-CASE XL, Vers. IV  
ABS (UL 94 HB)  
off-white RAL 9002  
168x74.4x35.4mm  
IP 65 opt., IP 40



**A9068139**  
SMART-CASE XL, Vers. IV  
ABS (UL 94 HB)  
black RAL 9005  
168x74.4x35.4mm  
IP 65 opt., IP 40



**A9068147**  
SMART-CASE XL, Vers. V  
ABS (UL 94 HB)  
off-white RAL 9002  
168x74.4x35.4mm  
IP 65 opt., IP 40



**A9068149**  
SMART-CASE XL, Vers. V  
ABS (UL 94 HB)  
black RAL 9005  
168x74.4x35.4mm  
IP 65 opt., IP 40



**A9068209**  
SMART-CASE XL, Vers. I  
PMMA (IR) (UL 94 HB)  
black RAL 9005  
168x74.4x35.4mm  
IP 40



**A9068219**  
SMART-CASE XL, Vers. II  
PMMA (IR) (UL 94 HB)  
black RAL 9005  
168x74.4x35.4mm  
IP 65 opt., IP 40



**A9068329**  
SMART-CASE XL, Vers. III  
ABS (UL 94 HB)  
black RAL 9005  
168x74.4x35.4mm  
IP 65 opt., IP 40



**A9068339**  
SMART-CASE XL, Vers. IV  
ABS (UL 94 HB)  
black RAL 9005  
168x74.4x35.4mm  
IP 65 opt., IP 40



**A9068349**  
SMART-CASE XL, Vers. V  
ABS (UL 94 HB)  
black RAL 9005  
168x74.4x35.4mm  
IP 65 opt., IP 40



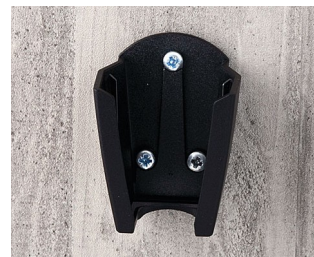
**A9166037**  
Station M  
ABS (UL 94 HB)  
off-white RAL 9002



**A9166039**  
Station M  
ABS (UL 94 HB)  
black RAL 9005



**A9166307**  
Holder M  
ABS (UL 94 HB)  
off-white RAL 9002



**A9166309**  
Holder M  
ABS (UL 94 HB)  
black RAL 9005



**A9167037**  
Station L  
ABS (UL 94 HB)  
off-white RAL 9002

# SMART-CASE



**A9167039**  
 Station L  
 ABS (UL 94 HB)  
 black RAL 9005



**A9167307**  
 Holder L  
 ABS (UL 94 HB)  
 off-white RAL 9002



**A9167309**  
 Holder L  
 ABS (UL 94 HB)  
 black RAL 9005



**A9168037**  
 Station XL  
 ABS (UL 94 HB)  
 off-white RAL 9002



**A9168039**  
 Station XL  
 ABS (UL 94 HB)  
 black RAL 9005

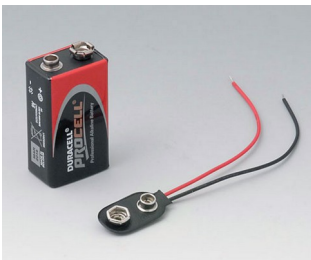


**A9168307**  
 Holder XL  
 ABS (UL 94 HB)  
 off-white RAL 9002



**A9168309**  
 Holder XL  
 ABS (UL 94 HB)  
 black RAL 9005

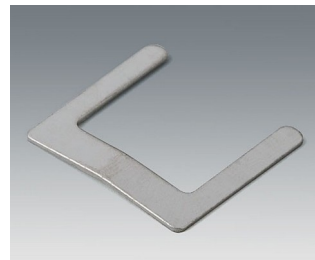
## Accessory "battery"



**A9160003**  
 Plug-in contact, 1 x 9 V (PP3)



**A9166001**  
 Set of battery clips, 2 x AAA  
 Steel  
 tin-plated



**A9166002**  
 Battery contact, 2 x AAA  
 Steel  
 tin-plated



**A9166003**  
 Battery holder, 2 x AAA  
 PA 6 (UL 94 HB)  
 black RAL 9005



**A9190002**  
 Set of battery clips,  
 2xN/2xAA/2xAAA  
 Steel  
 tin-plated



**A9190003**  
 Set of battery clips,  
 2xN/2xAA/2xAAA  
 Steel  
 nickel-plated

# SMART-CASE

## Accessory "station"



**A9166004**  
 Set of pull-relief  
 PA 6  
 volcano



**A9166037**  
 Station M  
 ABS (UL 94 HB)  
 off-white RAL 9002



**A9166039**  
 Station M  
 ABS (UL 94 HB)  
 black RAL 9005



**A9167037**  
 Station L  
 ABS (UL 94 HB)  
 off-white RAL 9002



**A9167039**  
 Station L  
 ABS (UL 94 HB)  
 black RAL 9005



**A9168037**  
 Station XL  
 ABS (UL 94 HB)  
 off-white RAL 9002



**A9168039**  
 Station XL  
 ABS (UL 94 HB)  
 black RAL 9005

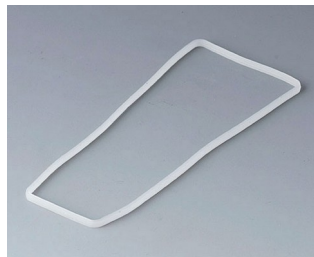


**A9193032**  
 Spring contact

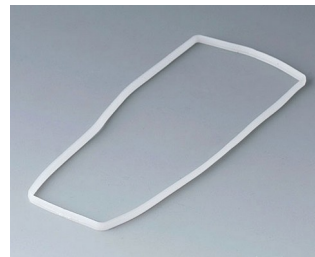
## Accessory "protection"



**A9166004**  
 Set of pull-relief  
 PA 6  
 volcano



**A9167002**  
 Sealing L



**A9168002**  
 Sealing XL

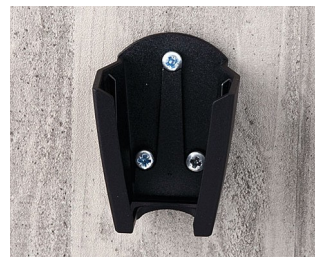
## Accessory "wall/holder"



**A9166005**  
 Adhesive foil M



**A9166307**  
 Holder M  
 ABS (UL 94 HB)  
 off-white RAL 9002



**A9166309**  
 Holder M  
 ABS (UL 94 HB)  
 black RAL 9005



**A9167005**  
 Adhesive foil L

# SMART-CASE



**A9167027**  
 Holding clamp  
 PA 6 (UL 94 HB)  
 off-white RAL 9002



**A9167029**  
 Holding clamp  
 PA 6 (UL 94 HB)  
 black RAL 9005



**A9167307**  
 Holder L  
 ABS (UL 94 HB)  
 off-white RAL 9002



**A9167309**  
 Holder L  
 ABS (UL 94 HB)  
 black RAL 9005



**A9168005**  
 Adhesive foil XL



**A9168307**  
 Holder XL  
 ABS (UL 94 HB)  
 off-white RAL 9002



**A9168309**  
 Holder XL  
 ABS (UL 94 HB)  
 black RAL 9005

## Accessory "carrying"



**A9100001**  
 Ring eyelet  
 PA 6  
 volcano



**A9100002**  
 Ring eyelet  
 PA 6  
 volcano



**A9164001**  
 Key ring  
 Steel  
 nickel-plated  
 20.5mm



**A9167017**  
 Belt/pocket clip  
 PA 6 (UL 94 HB)  
 off-white RAL 9002



**A9167019**  
 Belt/pocket clip  
 PA 6 (UL 94 HB)  
 black RAL 9005



**B9100063**  
 Carrying strap, textile lanyard  
 black  
 860mm

# SMART-CASE

## Accessory "screws"



A0304031  
Self-tapping screws 2.2 x 5 mm  
(PZ1)

## Accessory



A9166004  
Set of pull-relief  
PA 6  
volcano



A9166005  
Adhesive foil M



A9167005  
Adhesive foil L



A9168005  
Adhesive foil XL



A9193030  
Contact pin  
gold-plated



A9193032  
Spring contact

Subject to technical modification without notice. © by OKW Gehäusesysteme, Buchen/Germany.