

BLOB

Handheld enclosures modelled for the hand

Inspired by the touch sensation, the design of the BLOB family of plastic enclosures is entirely focused on the needs of the user.

- high level of practical value thanks to a convincing touch sensation; the user's hands intuitively grasp the enclosure in the correct way
* **iF product design award 2014 | German Design Award 2015** *
- the enclosures are designed to provide a natural grasp position which guides the operator's hands to the controls
- gentle and at the same time rugged
- huge number of possible applications
- 3 types
- **UNIT** – for single handed operation with keypad area and grip
- **CONTROL** – can be held with one hand and operated with the other. Separate keypad, activation and grip areas
- **PANEL** – for handheld or desktop use. With keypad, activation and two grip areas
- battery clips and Ø 12-23 mm button cells can be accommodated
- cable glands can be fitted at any position on the circumference of the enclosure
- recessed operating area for protecting the membrane keypad or decorative foil/label
- ABS (UL 94 HB), two colours
- optional IP 54 sealing kit
- internal screw pillars for PCBs

Designer Statement

"Wow, this fits your hand perfectly!", was the first comment on this mobile product with universal design. The intelligent form of BLOB was created by optimising ergonomic requirements. Whether young or old, everyone should be able to use these handheld enclosures intuitively. They are also flexible enough to accommodate a wide variety of applications and needs of the user. Where does the name come from? From architecture: Blob stands for 'Binary Large Object', a teardrop-shaped connection that can be formed in an unlimited number of ways."

Martin Nußberger, polyform Industrie Design

BLOB



Applications and Examples

Following the principles of “Universal Design”, BLOB supports applications that are flexible enough to meet the needs of a large number of people with different hand sizes and grasping volumes. For many different kinds of user-oriented applications, wireless or with cable. As self-sufficient or complementary units, or in a network with other equipment. Diagnostics, therapy, laboratory, industry, office, household and leisure time.



Biofeedback through vibration



HAUX Patient Entertainment remote control



Manual control for gentle colonoscopy



Registration system for kindergartens



RoyalGPS for precise position detection

BLOB

Customising Options

What do you still need for your own very personal product? We can supply enclosures and tuning knobs with all necessary modifications for fitting your electronic components.
Customising options for Blob



Machining



Lacquering



Printing



Laser marking



Decor foils



Special material



EMC shielding



Installation / Assembly
of accessories

Select Versions



B2510107
BLOB UNIT
ABS (UL 94 HB)
off-white RAL 9002
130x60x30mm
IP 54 opt.



B2510108
BLOB UNIT
ABS (UL 94 HB)
lava
130x60x30mm
IP 54 opt.



B2512107
BLOB CONTROL
ABS (UL 94 HB)
off-white RAL 9002
114x76x31mm
IP 54 opt.



B2512108
BLOB CONTROL
ABS (UL 94 HB)
lava
114x76x31mm
IP 54 opt.



B2514107
BLOB PANEL
ABS (UL 94 HB)
off-white RAL 9002
200x165x36mm
IP 54 opt.



B2514108
BLOB PANEL
ABS (UL 94 HB)
lava
200x165x36mm
IP 54 opt.

BLOB

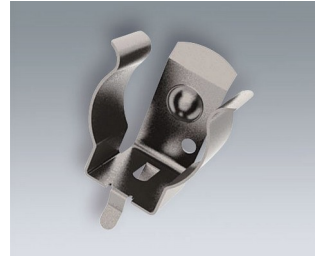
Accessory "battery"



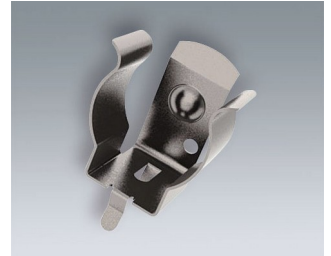
A9193033
Polarity reversal protection device, positive terminal AA
ABS (UL 94 HB)
off-white RAL 9002



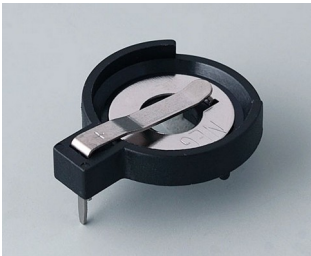
A9193034
Polarity reversal protection device, positive terminal AAA
ABS (UL 94 HB)
off-white RAL 9002



A9193035
Battery clip, AA
Steel
nickel-plated



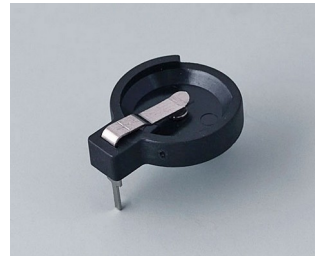
A9193036
Battery clip, AAA
Steel
nickel-plated



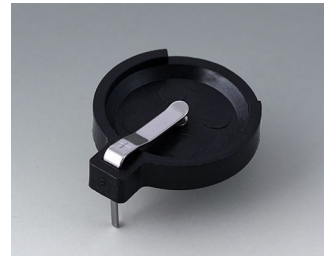
A9193037
Button cell holder, Ø 20 mm



A9193038
Button cell holder, Ø 23 mm

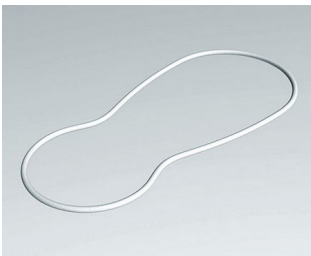


A9193039
Button cell holder, Ø 12 mm



A9193040
Button cell holder, Ø 16 mm

Accessory "protection"



B2610001
Sealing Unit



B2610101
Cable strain, 5.0 - 5.9
TPE
volcano



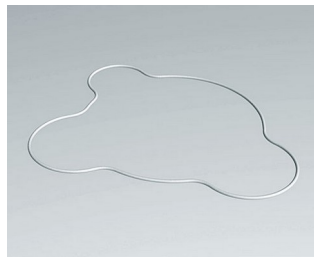
B2610111
Cable strain, 4.2 - 5.0
TPE
volcano



B2610121
Cable strain, 3.4 - 4.2
TPE
volcano



B2612001
Sealing Control



B2614001
Sealing Panel

BLOB

Accessory "screws"



A0305031
Self-tapping screws 2.5 x 6 mm
(PZ1)

Subject to technical modification without notice. © by OKW Gehäusesysteme, Buchen/Germany.