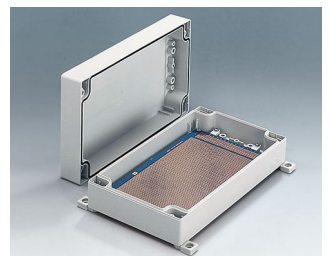
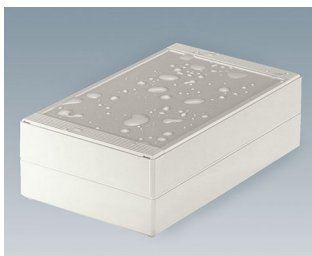
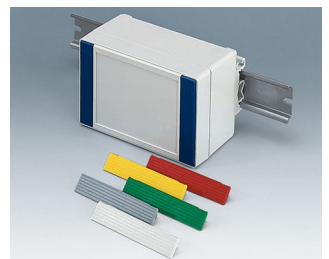
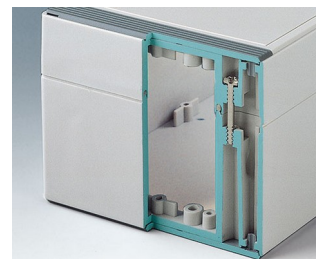
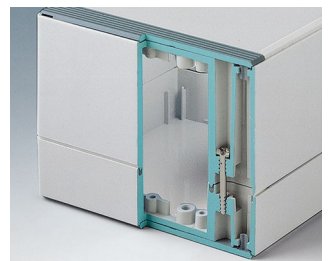


ROBUST-BOX

Universal IP 66 plastic enclosures

Both case shells of the ROBUST-BOX are equipped with pre-moulded threads. As a result, users can decide whether the flat or the high part of the case is used as the bottom part.

- versatile, sealed enclosures in eleven basic dimensions, different heights and two standard materials
- ABS (UL 94 HB), approved as a terminal mounting case
- PC (UL 94 HB), a solid and robust case, with high heat resistance for use in adverse environments
- usable as a handheld, desktop or wall mount enclosure, and also as a DIN rail enclosure (with accessory DIN rail clips)
- easy-assembly; the case shells can be used as either the top or the base section
- both parts with recessed operating area for protecting membrane keypads or product labels
- the cover fixings are outside of the sealed area; the fixing screws are rust proof and captured in the top part
- hidden screw shafts for wall mounting or external wall mounting brackets
- coloured cover strips for coding (as an alternative to the standard version in light grey)
- internal fastening pillars for PCBs and components
- extensive range of accessories: case feet, hinge, fastening elements to DIN rails, PCB support for mounting pre-assembled PCB units etc.



ROBUST-BOX

Applications and Examples

- These robust enclosures can be used for both electrical and electronic installations, for example heating, climate, ventilation, machine building and construction equipment
- Also, push-button controllers, sensors and measuring equipment
- Gateways



Fill level measurement in process technology



Heating Control



Humidity and temperature measuring unit



Measuring, regulating and metering unit for water quality



Portable metal detector



Robust monitoring systems



Sensor for air pollution



Stationary gas detection system

Customising Options

What do you still need for your own very personal product? We can supply enclosures and tuning knobs with all necessary modifications for fitting your electronic components. Customising options for Robust-Box



Machining



Lacquering



Printing



Laser marking



Decor foils



Special material



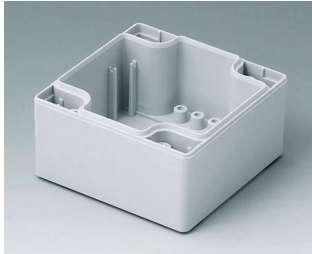
EMC shielding



Installation / Assembly of accessories

ROBUST-BOX

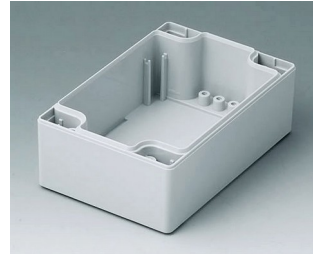
Select Versions



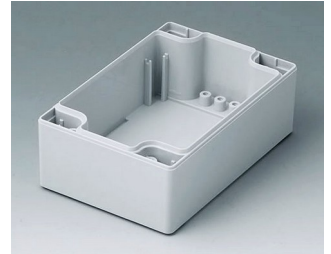
C1080801
Case shell 80, with tongue
ABS (UL 94 HB)
light grey RAL 7035
80x80x40mm



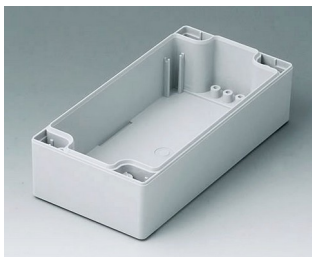
C1080802
Case shell 80, with tongue
PC (UL 94 HB)
light grey RAL 7035
80x80x40mm



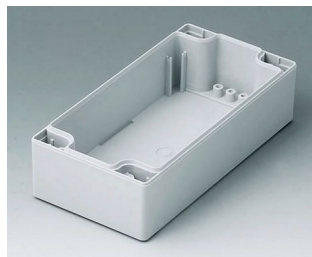
C1081201
Case shell 80, with tongue
ABS (UL 94 HB)
light grey RAL 7035
120x80x40mm



C1081202
Case shell 80, with tongue
PC (UL 94 HB)
light grey RAL 7035
120x80x40mm



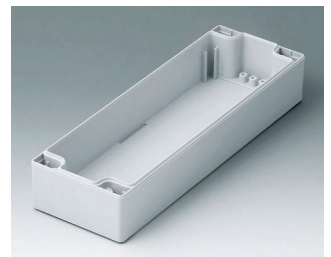
C1081601
Case shell 80, with tongue
ABS (UL 94 HB)
light grey RAL 7035
160x80x40mm



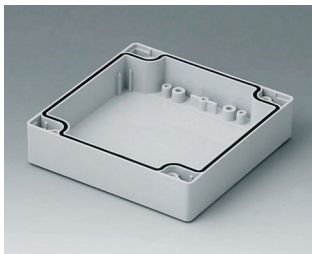
C1081602
Case shell 80, with tongue
PC (UL 94 HB)
light grey RAL 7035
160x80x40mm



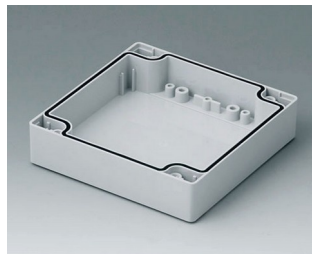
C1082401
Case shell 80, with tongue
ABS (UL 94 HB)
light grey RAL 7035
240x80x40mm



C1082402
Case shell 80, with tongue
PC (UL 94 HB)
light grey RAL 7035
240x80x40mm



C1121201
Case shell 120, with groove
ABS (UL 94 HB)
light grey RAL 7035
120x120x30mm



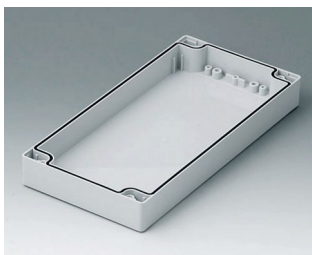
C1121202
Case shell 120, with groove
PC (UL 94 HB)
light grey RAL 7035
120x120x30mm



C1122001
Case shell 120, with groove
ABS (UL 94 HB)
light grey RAL 7035
200x120x30mm



C1122002
Case shell 120, with groove
PC (UL 94 HB)
light grey RAL 7035
200x120x30mm



C1122401
Case shell 120, with groove
ABS (UL 94 HB)
light grey RAL 7035
240x120x30mm



C1122402
Case shell 120, with groove
PC (UL 94 HB)
light grey RAL 7035
240x120x30mm



C1161601
Case shell 160, with groove
ABS (UL 94 HB)
light grey RAL 7035
160x160x30mm



C1161602
Case shell 160, with groove
PC (UL 94 HB)
light grey RAL 7035
160x160x30mm

ROBUST-BOX



C1162401
Case shell 160, with groove
ABS (UL 94 HB)
light grey RAL 7035
240x160x30mm



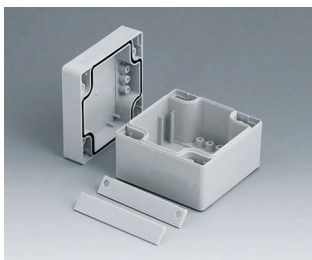
C1162402
Case shell 160, with groove
PC (UL 94 HB)
light grey RAL 7035
240x160x30mm



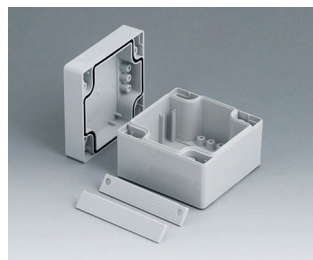
C1203001
Case shell 200, with tongue
ABS (UL 94 HB)
light grey RAL 7035
300x200x40mm



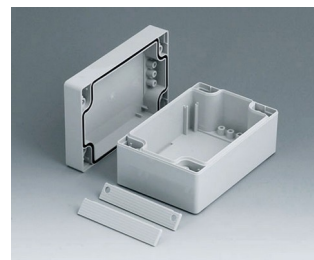
C1243601
Case shell 240, with tongue
ABS (UL 94 HB)
light grey RAL 7035
360x240x40mm



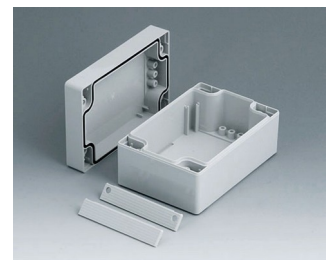
C2008081
ROBUST-BOX WIDTH 80, Vers.
I
ABS (UL 94 HB)
light grey RAL 7035
80x80x60mm
IP 66



C2008082
ROBUST-BOX WIDTH 80, Vers.
II
PC (UL 94 HB)
light grey RAL 7035
80x80x60mm
IP 66



C2008121
ROBUST-BOX WIDTH 80, Vers.
I
ABS (UL 94 HB)
light grey RAL 7035
120x80x60mm
IP 66



C2008122
ROBUST-BOX WIDTH 80, Vers.
II
PC (UL 94 HB)
light grey RAL 7035
120x80x60mm
IP 66



C2008161
ROBUST-BOX WIDTH 80, Vers.
I
ABS (UL 94 HB)
light grey RAL 7035
160x80x60mm
IP 66



C2008162
ROBUST-BOX WIDTH 80, Vers.
II
PC (UL 94 HB)
light grey RAL 7035
160x80x60mm
IP 66



C2008241
ROBUST-BOX WIDTH 80, Vers.
I
ABS (UL 94 HB)
light grey RAL 7035
240x80x60mm
IP 66



C2008242
ROBUST-BOX WIDTH 80, Vers.
II
PC (UL 94 HB)
light grey RAL 7035
240x80x60mm
IP 66



C2012121
ROBUST-BOX WIDTH 120,
Vers. I
ABS (UL 94 HB)
light grey RAL 7035
120x120x60mm
IP 66



C2012122
ROBUST-BOX WIDTH 120,
Vers. II
PC (UL 94 HB)
light grey RAL 7035
120x120x60mm
IP 66



C2012201
ROBUST-BOX WIDTH 120,
Vers. I
ABS (UL 94 HB)
light grey RAL 7035
200x120x60mm
IP 66



C2012202
ROBUST-BOX WIDTH 120,
Vers. II
PC (UL 94 HB)
light grey RAL 7035
200x120x60mm
IP 66

ROBUST-BOX



C2012241
ROBUST-BOX WIDTH 120,
Vers. I
ABS (UL 94 HB)
light grey RAL 7035
240x120x60mm
IP 66



C2012242
ROBUST-BOX WIDTH 120,
Vers. II
PC (UL 94 HB)
light grey RAL 7035
240x120x60mm
IP 66



C2016161
ROBUST-BOX WIDTH 160,
Vers. I
ABS (UL 94 HB)
light grey RAL 7035
160x160x60mm
IP 66



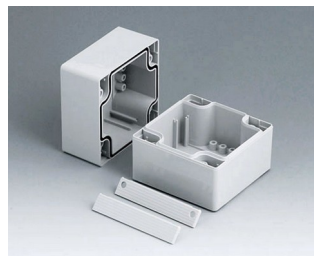
C2016162
ROBUST-BOX WIDTH 160,
Vers. II
PC (UL 94 HB)
light grey RAL 7035
160x160x60mm
IP 66



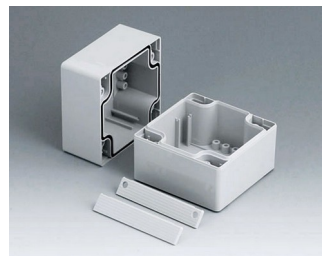
C2016241
ROBUST-BOX WIDTH 160,
Vers. I
ABS (UL 94 HB)
light grey RAL 7035
240x160x60mm
IP 66



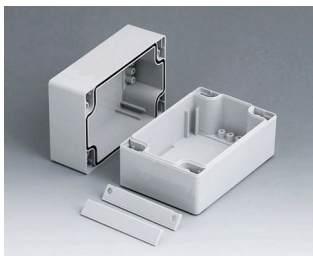
C2016242
ROBUST-BOX WIDTH 160,
Vers. II
PC (UL 94 HB)
light grey RAL 7035
240x160x60mm
IP 66



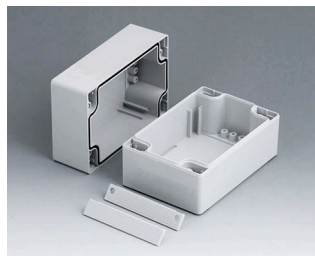
C2108081
ROBUST-BOX WIDTH 80, Vers.
I
ABS (UL 94 HB)
light grey RAL 7035
80x80x80mm
IP 66



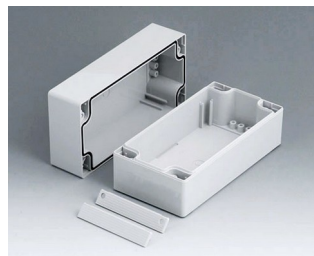
C2108082
ROBUST-BOX WIDTH 80, Vers.
II
PC (UL 94 HB)
light grey RAL 7035
80x80x80mm
IP 66



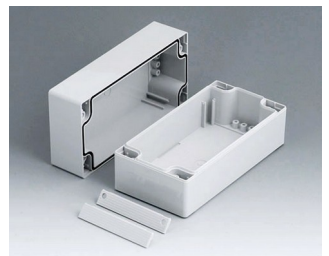
C2108121
ROBUST-BOX WIDTH 80, Vers.
I
ABS (UL 94 HB)
light grey RAL 7035
120x80x80mm
IP 66



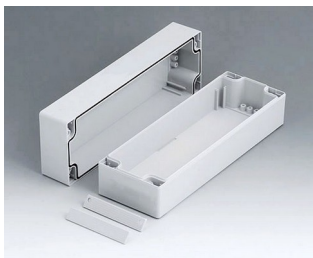
C2108122
ROBUST-BOX WIDTH 80, Vers.
II
PC (UL 94 HB)
light grey RAL 7035
120x80x80mm
IP 66



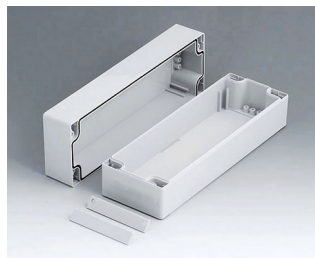
C2108161
ROBUST-BOX WIDTH 80, Vers.
I
ABS (UL 94 HB)
light grey RAL 7035
160x80x80mm
IP 66



C2108162
ROBUST-BOX WIDTH 80, Vers.
II
PC (UL 94 HB)
light grey RAL 7035
160x80x80mm
IP 66



C2108241
ROBUST-BOX WIDTH 80, Vers.
I
ABS (UL 94 HB)
light grey RAL 7035
240x80x80mm
IP 66



C2108242
ROBUST-BOX WIDTH 80, Vers.
II
PC (UL 94 HB)
light grey RAL 7035
240x80x80mm
IP 66

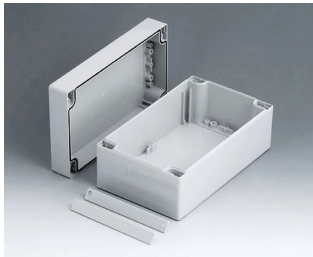


C2112121
ROBUST-BOX WIDTH 120,
Vers. I
ABS (UL 94 HB)
light grey RAL 7035
120x120x90mm
IP 66

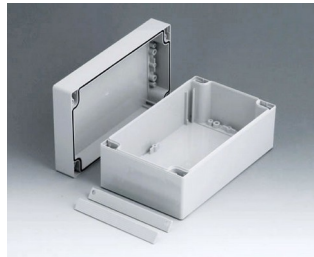


C2112122
ROBUST-BOX WIDTH 120,
Vers. II
PC (UL 94 HB)
light grey RAL 7035
120x120x90mm
IP 66

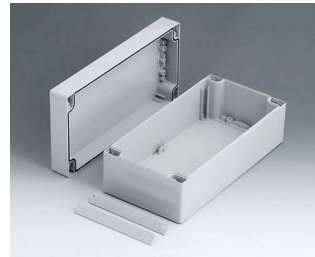
ROBUST-BOX



C2112201
ROBUST-BOX WIDTH 120,
Vers. I
ABS (UL 94 HB)
light grey RAL 7035
200x120x90mm
IP 66



C2112202
ROBUST-BOX WIDTH 120,
Vers. II
PC (UL 94 HB)
light grey RAL 7035
200x120x90mm
IP 66



C2112241
ROBUST-BOX WIDTH 120,
Vers. I
ABS (UL 94 HB)
light grey RAL 7035
240x120x90mm
IP 66



C2112242
ROBUST-BOX WIDTH 120,
Vers. II
PC (UL 94 HB)
light grey RAL 7035
240x120x90mm
IP 66



C2116161
ROBUST-BOX WIDTH 160,
Vers. I
ABS (UL 94 HB)
light grey RAL 7035
160x160x90mm
IP 66



C2116162
ROBUST-BOX WIDTH 160,
Vers. II
PC (UL 94 HB)
light grey RAL 7035
160x160x90mm
IP 66



C2116241
ROBUST-BOX WIDTH 160,
Vers. I
ABS (UL 94 HB)
light grey RAL 7035
240x160x90mm
IP 66



C2116242
ROBUST-BOX WIDTH 160,
Vers. II
PC (UL 94 HB)
light grey RAL 7035
240x160x90mm
IP 66



C2120301
ROBUST-BOX WIDTH 200,
Vers. I
ABS (UL 94 HB)
light grey RAL 7035
300x200x80mm
IP 66



C2124361
ROBUST-BOX WIDTH 240,
Vers. I
ABS (UL 94 HB)
light grey RAL 7035
360x240x80mm
IP 66



C2416241
ROBUST-BOX WIDTH 160,
Vers. I
ABS (UL 94 HB)
light grey RAL 7035
240x160x120mm
IP 66



C2416242
ROBUST-BOX WIDTH 160,
Vers. II
PC (UL 94 HB)
light grey RAL 7035
240x160x120mm
IP 66



C2420301
ROBUST-BOX WIDTH 200,
Vers. I
ABS (UL 94 HB)
light grey RAL 7035
300x200x120mm
IP 66



C2424361
ROBUST-BOX WIDTH 240,
Vers. I
ABS (UL 94 HB)
light grey RAL 7035
360x240x120mm
IP 66



C2520301
ROBUST-BOX WIDTH 200,
Vers. I
ABS (UL 94 HB)
light grey RAL 7035
300x200x160mm
IP 66



C2524361
ROBUST-BOX WIDTH 240,
Vers. I
ABS (UL 94 HB)
light grey RAL 7035
360x240x160mm
IP 66

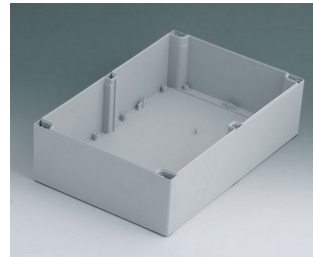
ROBUST-BOX



C3162401
Case shell 160, with groove
ABS (UL 94 HB)
light grey RAL 7035
240x160x60mm



C3162402
Case shell 160, with groove
PC (UL 94 HB)
light grey RAL 7035
240x160x60mm



C4203001
Case shell 200, with tongue
ABS (UL 94 HB)
light grey RAL 7035
300x200x80mm



C4243601
Case shell 240, with tongue
ABS (UL 94 HB)
light grey RAL 7035
360x240x80mm

System components to complete



C0080801
Case shell 80, with groove
ABS (UL 94 HB)
light grey RAL 7035
80x80x20mm



C0080802
Case shell 80, with groove
PC (UL 94 HB)
light grey RAL 7035
80x80x20mm



C0081201
Case shell 80, with groove
ABS (UL 94 HB)
light grey RAL 7035
120x80x20mm



C0081202
Case shell 80, with groove
PC (UL 94 HB)
light grey RAL 7035
120x80x20mm



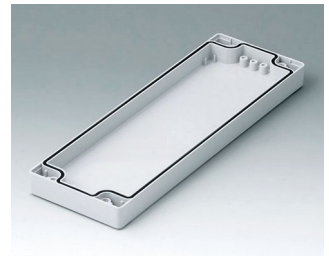
C0081601
Case shell 80, with groove
ABS (UL 94 HB)
light grey RAL 7035
160x80x20mm



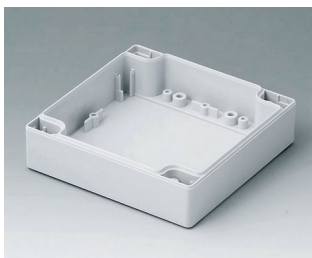
C0081602
Case shell 80, with groove
PC (UL 94 HB)
light grey RAL 7035
160x80x20mm



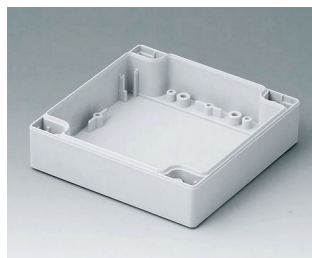
C0082401
Case shell 80, with groove
ABS (UL 94 HB)
light grey RAL 7035
240x80x20mm



C0082402
Case shell 80, with groove
PC (UL 94 HB)
light grey RAL 7035
240x80x20mm



C0121201
Case shell 120, with tongue
ABS (UL 94 HB)
light grey RAL 7035
120x120x30mm



C0121202
Case shell 120, with tongue
PC (UL 94 HB)
light grey RAL 7035
120x120x30mm

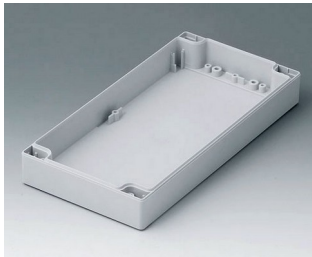


C0122001
Case shell 120, with tongue
ABS (UL 94 HB)
light grey RAL 7035
200x120x30mm



C0122002
Case shell 120, with tongue
PC (UL 94 HB)
light grey RAL 7035
200x120x30mm

ROBUST-BOX



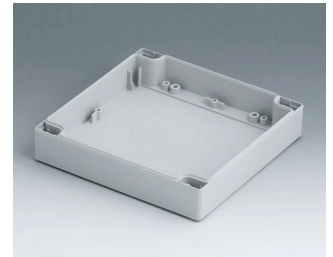
C0122401
Case shell 120, with tongue
ABS (UL 94 HB)
light grey RAL 7035
240x120x30mm



C0122402
Case shell 120, with tongue
PC (UL 94 HB)
light grey RAL 7035
240x120x30mm



C0161601
Case shell 160, with tongue
ABS (UL 94 HB)
light grey RAL 7035
160x160x30mm



C0161602
Case shell 160, with tongue
PC (UL 94 HB)
light grey RAL 7035
160x160x30mm



C0162401
Case shell 160, with tongue
ABS (UL 94 HB)
light grey RAL 7035
240x160x30mm



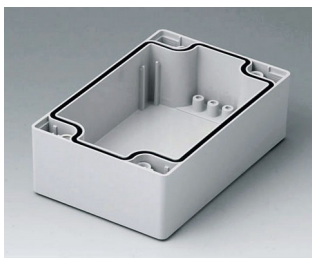
C0162402
Case shell 160, with tongue
PC (UL 94 HB)
light grey RAL 7035
240x160x30mm



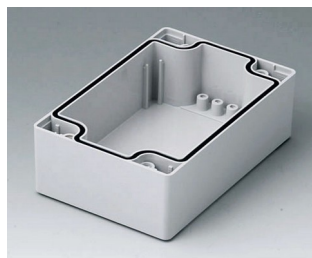
C2080801
Case shell 80, with groove
ABS (UL 94 HB)
light grey RAL 7035
80x80x40mm



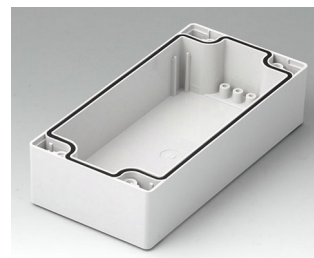
C2080802
Case shell 80, with groove
PC (UL 94 HB)
light grey RAL 7035
80x80x40mm



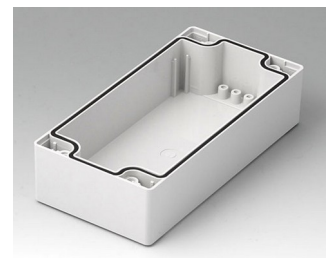
C2081201
Case shell 80, with groove
ABS (UL 94 HB)
light grey RAL 7035
120x80x40mm



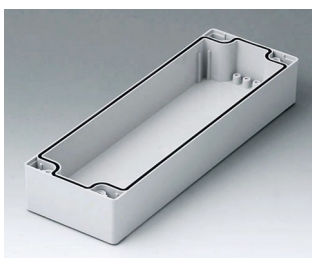
C2081202
Case shell 80, with groove
PC (UL 94 HB)
light grey RAL 7035
120x80x40mm



C2081601
Case shell 80, with groove
ABS (UL 94 HB)
light grey RAL 7035
160x80x40mm



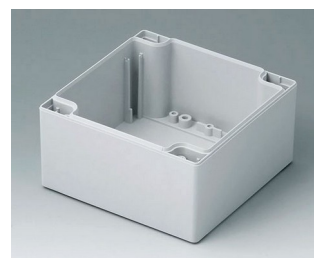
C2081602
Case shell 80, with groove
PC (UL 94 HB)
light grey RAL 7035
160x80x40mm



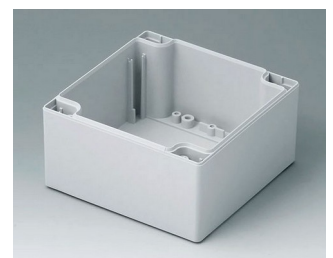
C2082401
Case shell 80, with groove
ABS (UL 94 HB)
light grey RAL 7035
240x80x40mm



C2082402
Case shell 80, with groove
PC (UL 94 HB)
light grey RAL 7035
240x80x40mm

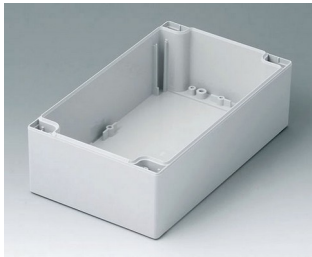


C2121201
Case shell 120, with tongue
ABS (UL 94 HB)
light grey RAL 7035
120x120x60mm

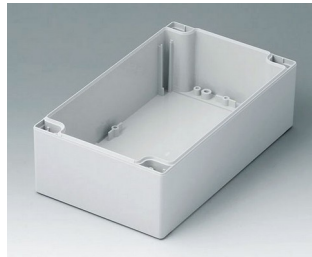


C2121202
Case shell 120, with tongue
PC (UL 94 HB)
light grey RAL 7035
120x120x60mm

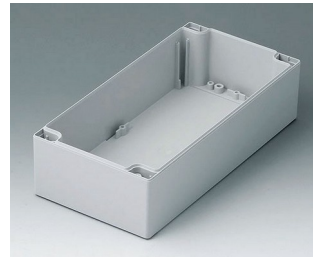
ROBUST-BOX



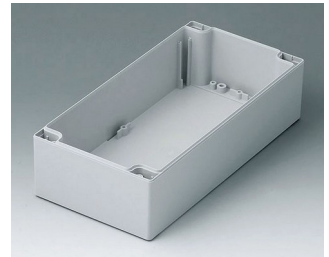
C2122001
Case shell 120, with tongue
ABS (UL 94 HB)
light grey RAL 7035
200x120x60mm



C2122002
Case shell 120, with tongue
PC (UL 94 HB)
light grey RAL 7035
200x120x60mm



C2122401
Case shell 120, with tongue
ABS (UL 94 HB)
light grey RAL 7035
240x120x60mm



C2122402
Case shell 120, with tongue
PC (UL 94 HB)
light grey RAL 7035
240x120x60mm



C2161601
Case shell 160, with tongue
ABS (UL 94 HB)
light grey RAL 7035
160x160x60mm



C2161602
Case shell 160, with tongue
PC (UL 94 HB)
light grey RAL 7035
160x160x60mm



C2162401
Case shell 160, with tongue
ABS (UL 94 HB)
light grey RAL 7035
240x160x60mm



C2162402
Case shell 160, with tongue
PC (UL 94 HB)
light grey RAL 7035
240x160x60mm



C2203001
Case shell 200, with groove
ABS (UL 94 HB)
light grey RAL 7035
300x200x40mm



C2243601
Case shell 240, with groove
ABS (UL 94 HB)
light grey RAL 7035
360x240x40mm



C2299001
Assembly kit



C2299002
Assembly kit



C5203001
Case shell 200, with groove
ABS (UL 94 HB)
light grey RAL 7035
300x200x80mm



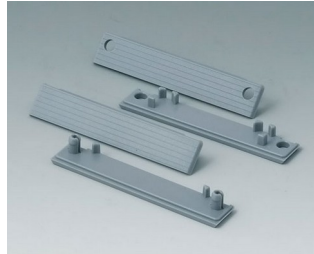
C5243601
Case shell 240, with groove
ABS (UL 94 HB)
light grey RAL 7035
360x240x80mm

ROBUST-BOX

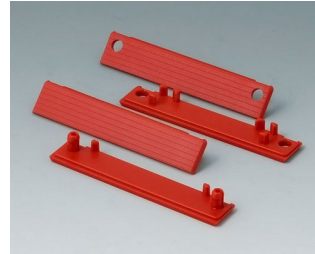
Accessory to complete



C2200801
Cover strips 80, without holes
PC (UL 94 HB)
light grey RAL 7035



C2201082
Cover strips 80
PC (UL 94 HB)
silver grey RAL 7001



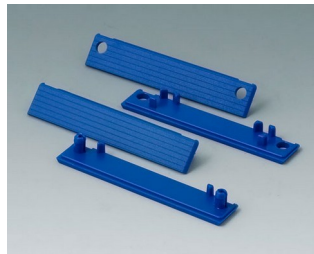
C2201084
Cover strips 80
PC (UL 94 HB)
red RAL 3020



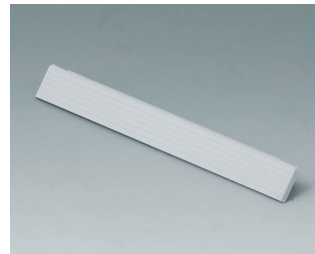
C2201085
Cover strips 80
PC (UL 94 HB)
yellow RAL 1023



C2201086
Cover strips 80
PC (UL 94 HB)
green RAL 6024



C2201087
Cover strips 80
PC (UL 94 HB)
blue RAL 5017



C2201201
Cover strips 120, without holes
PC (UL 94 HB)
light grey RAL 7035



C2201601
Cover strips 160, without holes
PC (UL 94 HB)
light grey RAL 7035



C2202001
Cover strips 200, without holes
PC (UL 94 HB)
light grey RAL 7035



C2202401
Cover strips 240, without holes
PC (UL 94 HB)
light grey RAL 7035



C2203123
Cover strips 120
PC (UL 94 HB)
silver grey RAL 7001



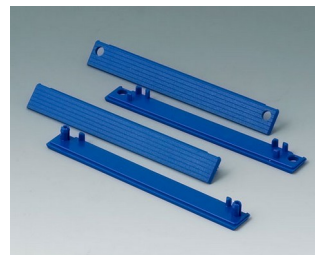
C2203124
Cover strips 120
PC (UL 94 HB)
red RAL 3020



C2203125
Cover strips 120
PC (UL 94 HB)
yellow RAL 1023



C2203126
Cover strips 120
PC (UL 94 HB)
green RAL 6024



C2203127
Cover strips 120
PC (UL 94 HB)
blue RAL 5017



C2204162
Cover strips 160
PC (UL 94 HB)
silver grey RAL 7001

ROBUST-BOX



C2204164
Cover strips 160
PC (UL 94 HB)
red RAL 3020



C2204165
Cover strips 160
PC (UL 94 HB)
yellow RAL 1023



C2204166
Cover strips 160
PC (UL 94 HB)
green RAL 6024



C2204167
Cover strips 160
PC (UL 94 HB)
blue RAL 5017



C2210801
Cover strips 80, with holes
PC (UL 94 HB)
light grey RAL 7035



C2211201
Cover strips 120, with holes
PC (UL 94 HB)
light grey RAL 7035



C2211601
Cover strips 160, with holes
PC (UL 94 HB)
light grey RAL 7035



C2212001
Cover strips 200, with holes
PC (UL 94 HB)
light grey RAL 7035



C2212401
Cover strips 240, with holes
PC (UL 94 HB)
light grey RAL 7035

Accessory "protection"



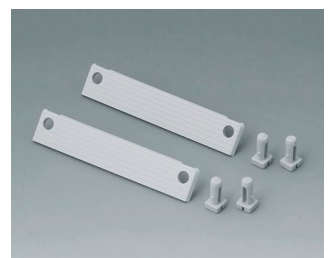
C2299040
Security plug
PA 6 (UL 94 HB)
light grey RAL 7035



C2299042
Security kit width 120
PA 6 (UL 94 HB)
light grey RAL 7035



C2299046
Security kit width 160
PA 6 (UL 94 HB)
light grey RAL 7035



C2299048
Security kit width 80
PA 6 (UL 94 HB)
light grey RAL 7035

ROBUST-BOX



C2306917
Pressure equalisation element
M6x0.75
PA 6 (UL 94 HB)
light grey RAL 7035
IP 56



C2310917
Pressure equalisation element
M10x1
PA 6 (UL 94 HB)
light grey RAL 7035
IP 56

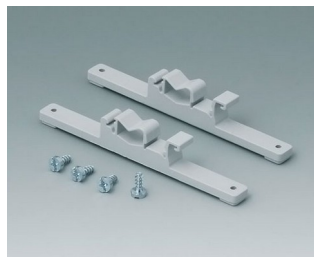


C2320137
Cable grommet
EPDM
light grey RAL 7035
IP 67

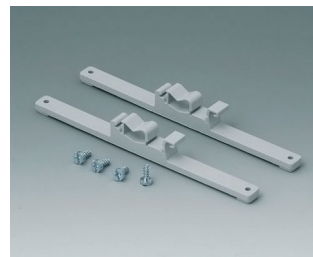
Accessory "wall/holder"



C2201088
Fastening elements to DIN-Rails
PA 6
light grey RAL 7035



C2203128
Fastening elements to DIN-Rails
PA 6
light grey RAL 7035



C2204168
Fastening elements to DIN-Rails
PA 6
light grey RAL 7035



C2299028
Wall mounting brackets
PA 6 (UL 94 HB)
light grey RAL 7035



C2299031
Securing hinge for the cover
PP
natural-coloured



C2299088
Hinge
PA 6
light grey RAL 7035

Accessory "screws"



A0306031
Self-tapping screws 3 x 6 mm
(PZ1)



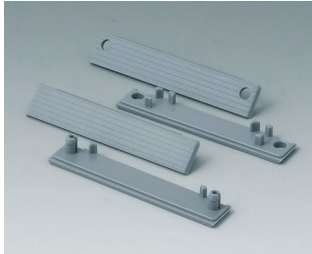
A0308031
Self-tapping screws 3 x 8 mm
(PZ1)



A0308132
Self-tapping screw 3 x 8 mm
(T10)
Stainless steel

ROBUST-BOX

Accessory



C2201082
Cover strips 80
PC (UL 94 HB)
silver grey RAL 7001



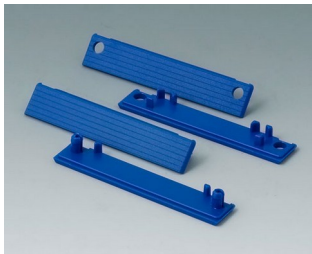
C2201084
Cover strips 80
PC (UL 94 HB)
red RAL 3020



C2201085
Cover strips 80
PC (UL 94 HB)
yellow RAL 1023



C2201086
Cover strips 80
PC (UL 94 HB)
green RAL 6024



C2201087
Cover strips 80
PC (UL 94 HB)
blue RAL 5017



C2203123
Cover strips 120
PC (UL 94 HB)
silver grey RAL 7001



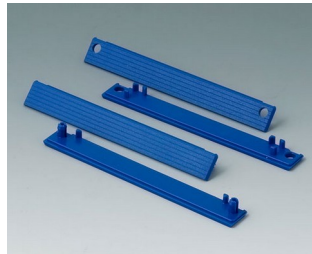
C2203124
Cover strips 120
PC (UL 94 HB)
red RAL 3020



C2203125
Cover strips 120
PC (UL 94 HB)
yellow RAL 1023



C2203126
Cover strips 120
PC (UL 94 HB)
green RAL 6024



C2203127
Cover strips 120
PC (UL 94 HB)
blue RAL 5017



C2204162
Cover strips 160
PC (UL 94 HB)
silver grey RAL 7001



C2204164
Cover strips 160
PC (UL 94 HB)
red RAL 3020



C2204165
Cover strips 160
PC (UL 94 HB)
yellow RAL 1023



C2204166
Cover strips 160
PC (UL 94 HB)
green RAL 6024



C2204167
Cover strips 160
PC (UL 94 HB)
blue RAL 5017

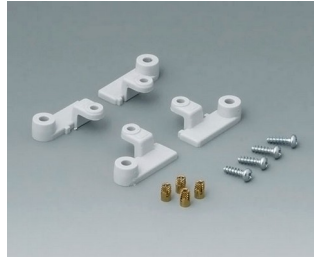


C2299018
Case feet
TPE (UL 94 HB)

ROBUST-BOX



C2299058
PCB support
PC (UL 94 HB)
light grey RAL 7035



C2299068
PCB support
PC (UL 94 HB)
light grey RAL 7035

Subject to technical modification without notice. © by OKW Gehäusesysteme, Buchen/Germany.