

# RAILTEC C

## Modular DIN rail enclosures and open PCB holders

Extensive range of DIN rail plastic enclosures for mounting to standard DIN EN 60715 rails, or for panel mounting. Also, open DIN rail PCB supports/holders for individual component mounting and simple replacement of the interfaces.

- all types designed for fast installation of PCBs and terminals
- outstanding material properties for tough conditions, with high temperature stability (UL 94 V-0)
- easy and fast assembly with snap-in installation of the enclosure parts
- **RAILTEC C:** for PCB terminal blocks, plug headers and front connectors; optional frame for additional PCB position; front panels and lids in different versions; 1 to 12 module widths; for DIN rails EN 60715 TH35; PCB positioning in all 3 directions; adapter for TH15 and G32 rails (1 to 4 module models) as accessory
  - Version I front open, connection side with free through passage, without ventilation slots
  - Version II front open, connection side with free through passage, with ventilation slots
  - Version III front open, connection side with extended case wall, without ventilation slots
  - Version IV front closed, connection side with free through passage, without ventilation slots
- **RAILTEC SUPPORT:** PCB holder for DIN rail mounting; modular design for individual component mounting; for DIN rails EN 60715 TH35, TH15 and G32
- protection class < IP 40



### Customising Options

# RAILTEC C

What do you still need for your own very personal product? We can supply enclosures and tuning knobs with all necessary modifications for fitting your electronic components.  
Customising options for Railtec C



Machining



Lacquering



Printing



Laser marking



Decor foils



Installation / Assembly  
of accessories

## Select Versions



**B6700100**  
RAILTEC C, 1 module, Vers. I  
PC (UL 94 V-0)  
light grey  
17.5x90x58mm



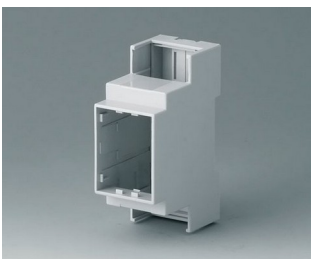
**B6700102**  
RAILTEC C, 1 module, Vers. II  
PC (UL 94 V-0)  
light grey  
17.5x90x58mm



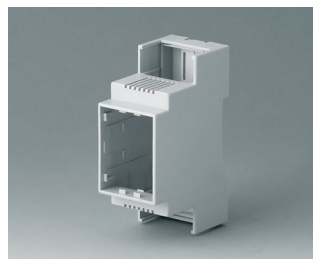
**B6700104**  
RAILTEC C, 1 module, Vers. III  
PC (UL 94 V-0)  
light grey  
17.5x90x58mm



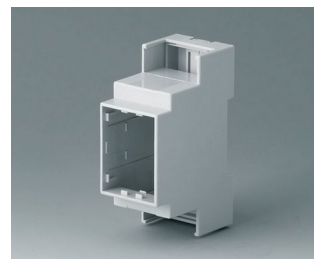
**B6700106**  
RAILTEC C, 1 module, Vers. IV  
PC (UL 94 V-0)  
light grey  
17.5x90x58mm



**B6701100**  
RAILTEC C, 2 modules, Vers. I  
PC (UL 94 V-0)  
light grey  
36x90x58mm



**B6701102**  
RAILTEC C, 2 modules, Vers. II  
PC (UL 94 V-0)  
light grey  
36x90x58mm



**B6701104**  
RAILTEC C, 2 modules, Vers. III  
PC (UL 94 V-0)  
light grey  
36x90x58mm

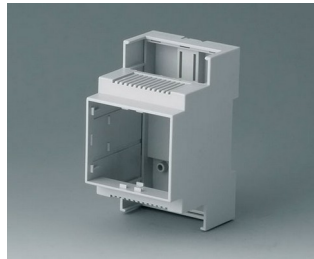


**B6701106**  
RAILTEC C, 2 modules, Vers. IV  
PC (UL 94 V-0)  
light grey  
36x90x58mm

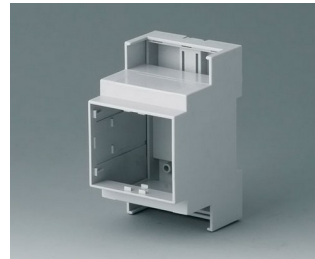
# RAILTEC C



**B6702100**  
 RAILTEC C, 3 modules, Vers. I  
 PC (UL 94 V-0)  
 light grey  
 53x90x58mm



**B6702102**  
 RAILTEC C, 3 modules, Vers. II  
 PC (UL 94 V-0)  
 light grey  
 53x90x58mm



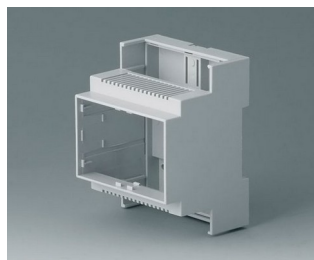
**B6702104**  
 RAILTEC C, 3 modules, Vers. III  
 PC (UL 94 V-0)  
 light grey  
 53x90x58mm



**B6702106**  
 RAILTEC C, 3 modules, Vers. IV  
 PC (UL 94 V-0)  
 light grey  
 53x90x58mm



**B6703100**  
 RAILTEC C, 4 modules, Vers. I  
 PC (UL 94 V-0)  
 light grey  
 71x90x58mm



**B6703102**  
 RAILTEC C, 4 modules, Vers. II  
 PC (UL 94 V-0)  
 light grey  
 71x90x58mm



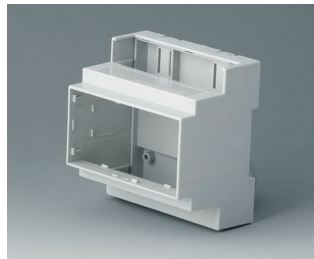
**B6703104**  
 RAILTEC C, 4 modules, Vers. III  
 PC (UL 94 V-0)  
 light grey  
 71x90x58mm



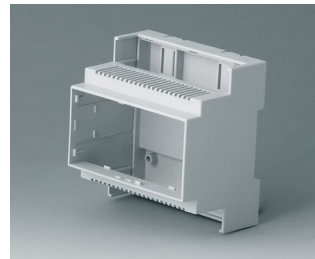
**B6703106**  
 RAILTEC C, 4 modules, Vers. IV  
 PC (UL 94 V-0)  
 light grey  
 71x90x58mm



**B6704100**  
 RAILTEC C, 5 modules, Vers. I  
 PC (UL 94 V-0)  
 light grey  
 88x90x58mm



**B6704101**  
 RAILTEC C, 5 modules, Vers. I  
 PC (UL 94 V-0)  
 light grey  
 88x90x58mm



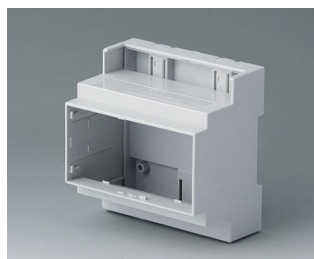
**B6704102**  
 RAILTEC C, 5 modules, Vers. II  
 PC (UL 94 V-0)  
 light grey  
 88x90x58mm



**B6704103**  
 RAILTEC C, 5 modules, Vers. II  
 PC (UL 94 V-0)  
 light grey  
 88x90x58mm



**B6704104**  
 RAILTEC C, 5 modules, Vers. III  
 PC (UL 94 V-0)  
 light grey  
 88x90x58mm



**B6704105**  
 RAILTEC C, 5 modules, Vers. III  
 PC (UL 94 V-0)  
 light grey  
 88x90x58mm



**B6704106**  
 RAILTEC C, 5 modules, Vers. IV  
 PC (UL 94 V-0)  
 light grey  
 88x90x58mm



**B6704107**  
 RAILTEC C, 5 modules, Vers. IV  
 PC (UL 94 V-0)  
 light grey  
 88x90x58mm

# RAILTEC C



**B6705100**  
RAILTEC C, 6 modules, Vers. I  
PC (UL 94 V-0)  
light grey  
106x90x58mm



**B6705101**  
RAILTEC C, 6 modules, Vers. I  
PC (UL 94 V-0)  
light grey  
106x90x58mm



**B6705102**  
RAILTEC C, 6 modules, Vers. II  
PC (UL 94 V-0)  
light grey  
106x90x58mm



**B6705103**  
RAILTEC C, 6 modules, Vers. II  
PC (UL 94 V-0)  
light grey  
106x90x58mm



**B6705104**  
RAILTEC C, 6 modules, Vers. III  
PC (UL 94 V-0)  
light grey  
106x90x58mm



**B6705105**  
RAILTEC C, 6 modules, Vers. III  
PC (UL 94 V-0)  
light grey  
106x90x58mm



**B6705106**  
RAILTEC C, 6 modules, Vers. IV  
PC (UL 94 V-0)  
light grey  
106x90x58mm



**B6705107**  
RAILTEC C, 6 modules, Vers. IV  
PC (UL 94 V-0)  
light grey  
106x90x58mm



**B6705800**  
RAILTEC C, 6 modules, flat,  
Vers. I  
PC (UL 94 V-0)  
light grey  
106.2x90x32mm



**B6705806**  
RAILTEC C, 6 modules, flat,  
Vers. IV  
PC (UL 94 V-0)  
light grey  
106.2x90x32mm



**B6706100**  
RAILTEC C, 9 modules, Vers. I  
PC (UL 94 V-0)  
light grey  
160x90x58mm



**B6706101**  
RAILTEC C, 9 modules, Vers. I  
PC (UL 94 V-0)  
light grey  
160x90x58mm



**B6706102**  
RAILTEC C, 9 modules, Vers. II  
PC (UL 94 V-0)  
light grey  
160x90x58mm



**B6706103**  
RAILTEC C, 9 modules, Vers. II  
PC (UL 94 V-0)  
light grey  
160x90x58mm

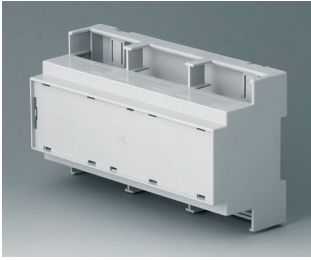


**B6706104**  
RAILTEC C, 9 modules, Vers. III  
PC (UL 94 V-0)  
light grey  
160x90x58mm



**B6706105**  
RAILTEC C, 9 modules, Vers. III  
PC (UL 94 V-0)  
light grey  
160x90x58mm

# RAILTEC C



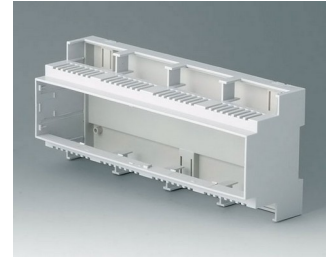
**B6706106**  
RAILTEC C, 9 modules, Vers. IV  
PC (UL 94 V-0)  
light grey  
160x90x58mm



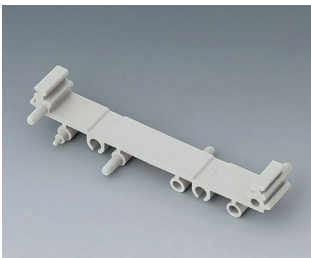
**B6706107**  
RAILTEC C, 9 modules, Vers. IV  
PC (UL 94 V-0)  
light grey  
160x90x58mm



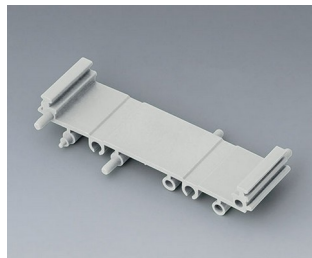
**B6707100**  
RAILTEC C, 12 modules, Vers. I  
PC (UL 94 V-0)  
light grey  
210x90x58mm



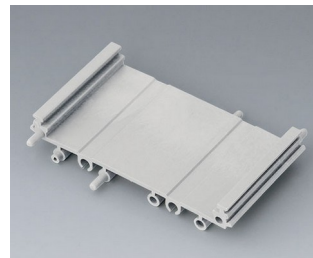
**B6707102**  
RAILTEC C, 12 modules, Vers. II  
PC (UL 94 V-0)  
light grey  
210x90x58mm



**B6724330**  
RAILTEC SUP. 72, intermediate  
part  
PA 6 (30) (UL 94 V-0)  
light grey  
82x11.25x16mm



**B6724331**  
RAILTEC SUP. 72, intermediate  
part  
PA 6 (30) (UL 94 V-0)  
light grey  
82x22.5x16mm



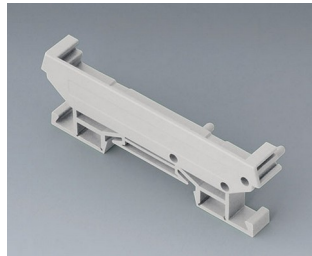
**B6724332**  
RAILTEC SUP. 72, intermediate  
part  
PA 6 (30) (UL 94 V-0)  
light grey  
82x45x16mm



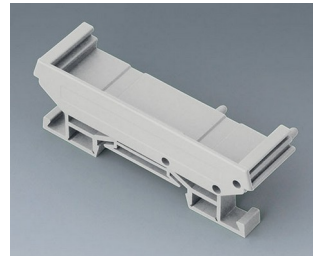
**B6724333**  
RAILTEC SUP. 72, end section  
PA 6 (30) (UL 94 V-0)  
light grey  
82x11.2x16mm



**B6724334**  
RAILTEC SUP. 72, end section  
PA 6 (30) (UL 94 V-0)  
light grey  
82x22.2x16mm



**B6724335**  
RAILTEC SUP. 72, end section  
with foot  
PA 6 (30) (UL 94 V-0)  
light grey  
82x11.2x22.5mm



**B6724336**  
RAILTEC SUP. 72, end section  
with foot  
PA 6 (30) (UL 94 V-0)  
light grey  
82x22.2x22.5mm



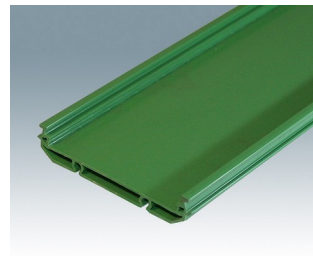
**B6724444**  
RAILTEC SUP. 107, end section  
PA 6 (30) (UL 94 V-0)  
light grey  
118x11.5x17.5mm



**B6724445**  
RAILTEC SUP. 107, end section  
with foot  
PA 6 (30) (UL 94 V-0)  
light grey  
118x11.5x27.5mm



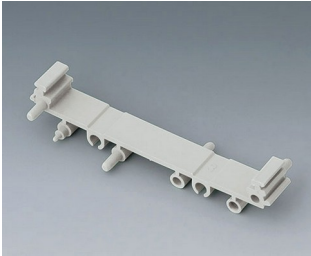
**CIME/E/BExxx**  
RAILTEC SUP. EXT 107, base  
section  
PVC (UL 94 V-0)  
green  
117x18mm



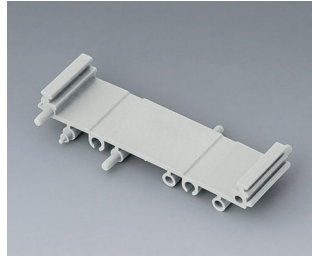
**CIME/M/BExxx**  
RAILTEC SUP. EXT 72, base  
section  
PVC (UL 94 V-0)  
green  
80x16mm

# RAILTEC C

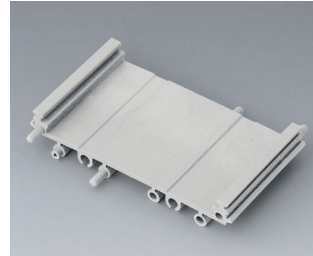
## System components to complete



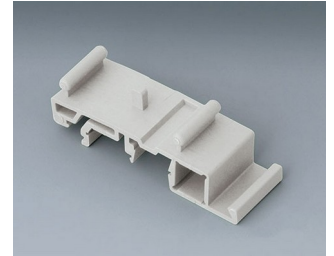
**B6724330**  
RAILTEC SUP. 72, intermediate part  
PA 6 (30) (UL 94 V-0)  
light grey  
82x11.25x16mm



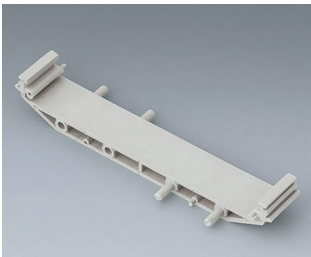
**B6724331**  
RAILTEC SUP. 72, intermediate part  
PA 6 (30) (UL 94 V-0)  
light grey  
82x22.5x16mm



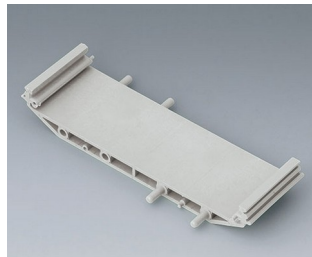
**B6724332**  
RAILTEC SUP. 72, intermediate part  
PA 6 (30) (UL 94 V-0)  
light grey  
82x45x16mm



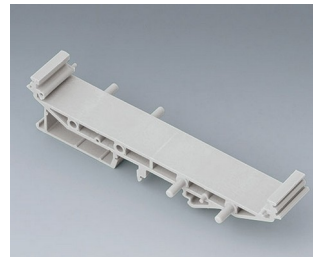
**B6724337**  
RAILTEC SUP. 72, foot  
PA 6 (30) (UL 94 V-0)  
light grey



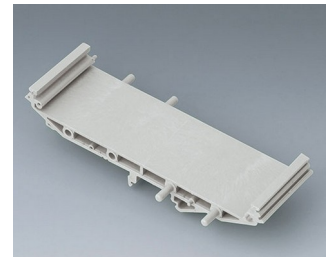
**B6724440**  
RAILTEC SUP. 107, intermediate part  
PA 6 (30) (UL 94 V-0)  
light grey  
118x18.5x17.5mm



**B6724441**  
RAILTEC SUP. 107, intermediate part  
PA 6 (30) (UL 94 V-0)  
light grey  
118x35x17.5mm

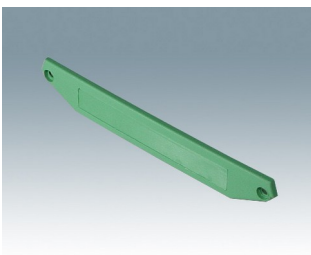


**B6724442**  
RAILTEC SUP. 107, intermediate p. + foot  
PA 6 (30) (UL 94 V-0)  
light grey  
118x18.5x27.5mm

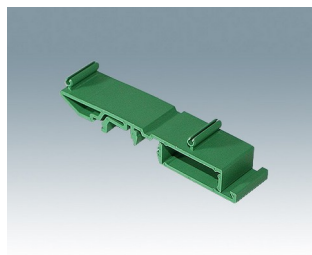


**B6724443**  
RAILTEC SUP. 107, intermediate p. + foot  
PA 6 (30) (UL 94 V-0)  
light grey  
118x35x27.5mm

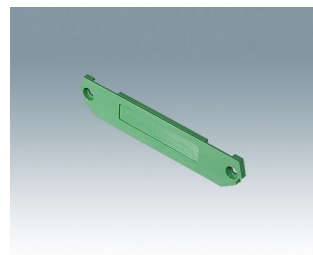
## Accessory to complete



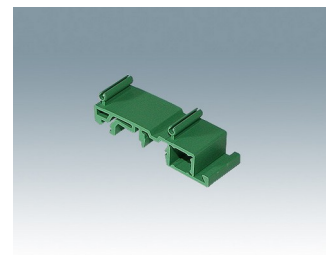
**CIME/E/EC0000E**  
RAILTEC SUP. EXT 107, end cover  
PA66 (UL 94 V-0)  
green  
2.5x17.5x118mm



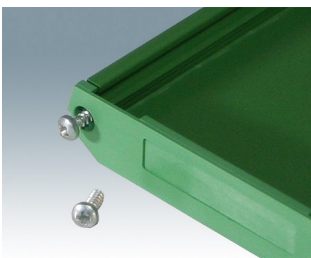
**CIME/E/FE0000E**  
RAILTEC SUP. EXT 107, DIN rail foot  
PA66 (UL 94 V-0)  
green  
20.5x12.5x91.5mm



**CIME/M/EC0000E**  
RAILTEC SUP. EXT 72, end cover  
PA66 (UL 94 V-0)  
green  
2x16x82mm



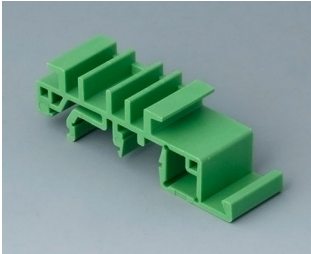
**CIME/M/FE0000E**  
RAILTEC SUP. EXT 72, DIN rail foot  
PA66 (UL 94 V-0)  
green  
20.5x12.5x60mm



**CIME/M/SCR**  
Self-tapping screw

# RAILTEC C

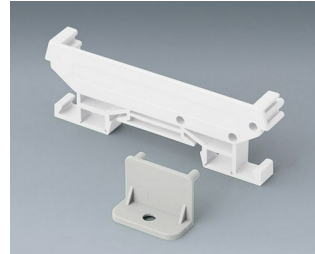
## Accessory "wall/holder"



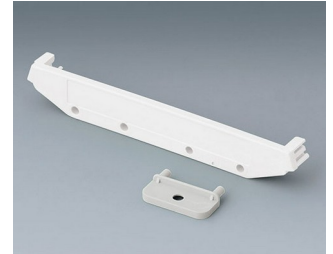
**B6811542**  
Adapter  
PA 6 (UL 94 V-0)  
green



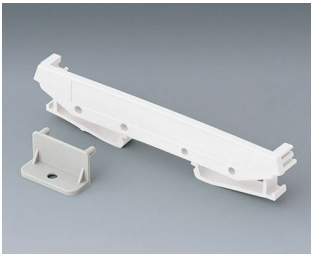
**B6824532**  
Wall suspension element for  
SUP. 72  
PA 6 (30) (UL 94 V-0)  
light grey



**B6824533**  
Wall suspension element with  
foot, SUP.  
PA 6 (30) (UL 94 V-0)  
light grey

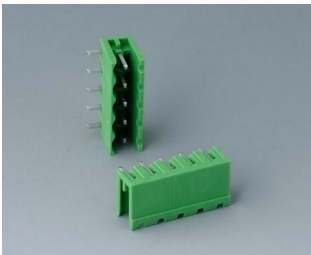


**B6824542**  
Wall suspension element for  
SUP. 107  
PA 6 (30) (UL 94 V-0)  
light grey



**B6824543**  
Wall suspension element with  
foot, SUP.  
PA 6 (30) (UL 94 V-0)  
light grey

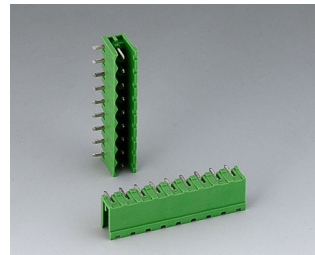
## Accessory "terminals"



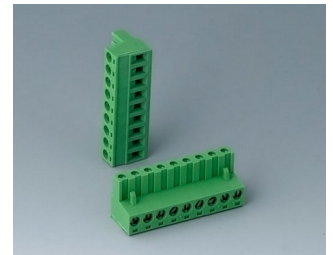
**B6601222**  
Plug header, block 5.08  
PA 6 (UL 94 V-0)



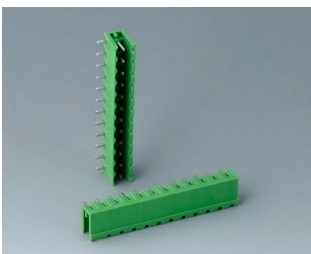
**B6601223**  
Plug header, block 5.08  
PA 6 (UL 94 V-0)



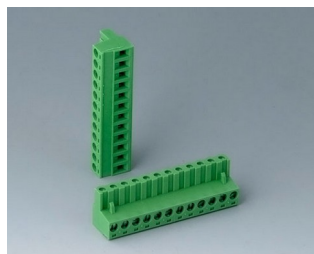
**B6602222**  
Plug header, block 5.08  
PA 6 (UL 94 V-0)



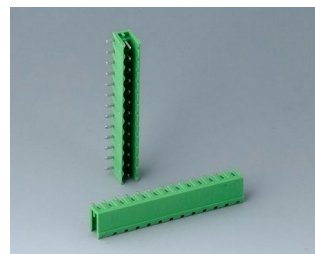
**B6602223**  
Plug header, block 5.08  
PA 6 (UL 94 V-0)



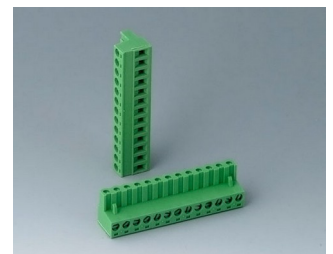
**B6603222**  
Plug header, block 5.08  
PA 6 (UL 94 V-0)



**B6603223**  
Plug header, block 5.08  
PA 6 (UL 94 V-0)

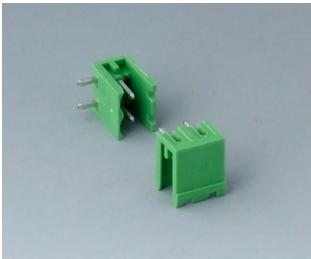


**B6605222**  
Plug header, block 5.08  
PA 6 (UL 94 V-0)



**B6605223**  
Plug header, block 5.08  
PA 6 (UL 94 V-0)

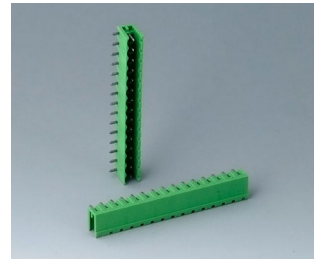
# RAILTEC C



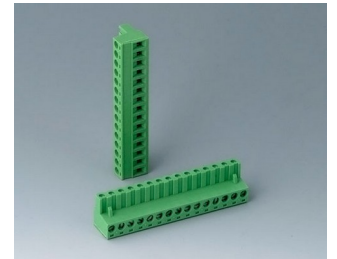
**B6606222**  
Plug header, block 5.08  
PA 6 (UL 94 V-0)



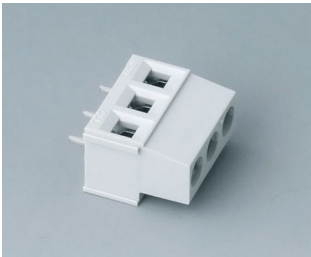
**B6606223**  
Plug header, block 5.08  
PA 6 (UL 94 V-0)



**B6607222**  
Plug header, block 5.08  
PA 6 (UL 94 V-0)



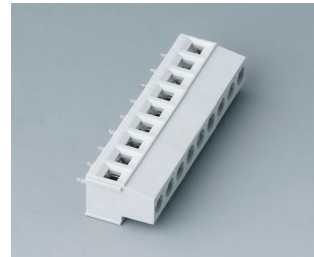
**B6607223**  
Plug header, block 5.08  
PA 6 (UL 94 V-0)



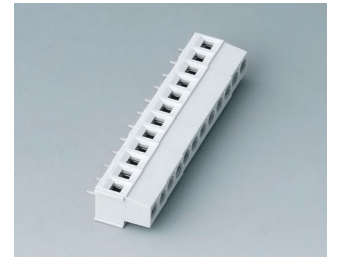
**B6800650**  
Terminal block, block 5.08  
PA 68 (UL 94 V-0)  
light grey



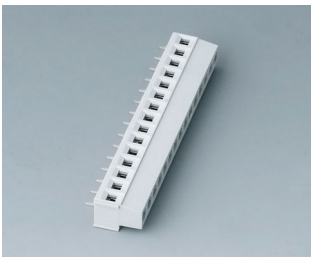
**B6801650**  
Terminal block, block 5.08  
PA 68 (UL 94 V-0)  
light grey



**B6802650**  
Terminal block, block 5.08  
PA 68 (UL 94 V-0)  
light grey



**B6803650**  
Terminal block, block 5.08  
PA 68 (UL 94 V-0)  
light grey



**B6804650**  
Terminal block, block 5.08  
PA 68 (UL 94 V-0)  
light grey

## Accessory "terminal guards"



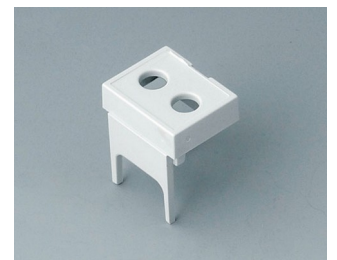
**B6800111**  
Terminal guards, closed  
PC (UL 94 V-0)  
light grey



**B6800112**  
Terminal guards, perforated,  
5.08  
PC (UL 94 V-0)  
light grey

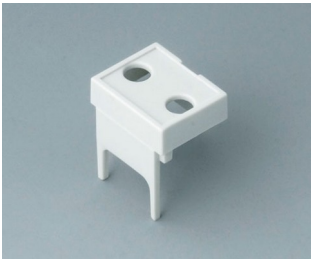


**B6800113**  
Terminal guards, with holes, 5.08  
PC (UL 94 V-0)  
light grey



**B6800114**  
Terminal guards, with holes, 7.5  
& 7.62  
PC (UL 94 V-0)  
light grey

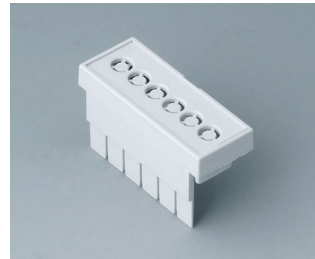
# RAILTEC C



**B6800115**  
Terminal guards, with holes,  
10.16  
PC (UL 94 V-0)  
light grey



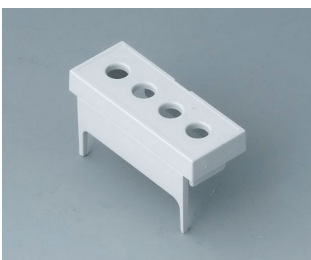
**B6801111**  
Terminal guards, closed  
PC (UL 94 V-0)  
light grey



**B6801112**  
Terminal guards, perforated,  
5.08  
PC (UL 94 V-0)  
light grey



**B6801113**  
Terminal guards, with holes, 5.08  
PC (UL 94 V-0)  
light grey



**B6801114**  
Terminal guards, with holes, 7.5  
& 7.62  
PC (UL 94 V-0)  
light grey



**B6801115**  
Terminal guards, with holes,  
10.16  
PC (UL 94 V-0)  
light grey



**B6802111**  
Terminal guards, closed  
PC (UL 94 V-0)  
light grey



**B6802112**  
Terminal guards, perforated,  
5.08  
PC (UL 94 V-0)  
light grey



**B6802113**  
Terminal guards, with holes, 5.08  
PC (UL 94 V-0)  
light grey



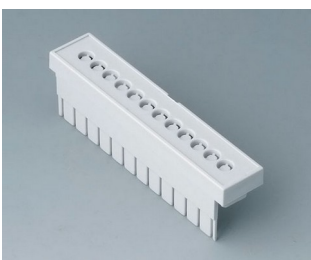
**B6802114**  
Terminal guards, with holes, 7.5  
& 7.62  
PC (UL 94 V-0)  
light grey



**B6802115**  
Terminal guards, with holes,  
10.16  
PC (UL 94 V-0)  
light grey



**B6803111**  
Terminal guards, closed  
PC (UL 94 V-0)  
light grey



**B6803112**  
Terminal guards, perforated,  
5.08  
PC (UL 94 V-0)  
light grey



**B6803113**  
Terminal guards, with holes, 5.08  
PC (UL 94 V-0)  
light grey



**B6803114**  
Terminal guards, with holes, 7.5  
& 7.62  
PC (UL 94 V-0)  
light grey

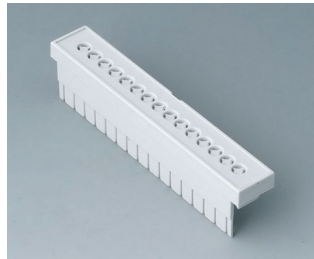


**B6803115**  
Terminal guards, with holes,  
10.16  
PC (UL 94 V-0)  
light grey

# RAILTEC C



**B6804111**  
Terminal guards, closed  
PC (UL 94 V-0)  
light grey



**B6804112**  
Terminal guards, perforated,  
5.08  
PC (UL 94 V-0)  
light grey



**B6804113**  
Terminal guards, with holes, 5.08  
PC (UL 94 V-0)  
light grey

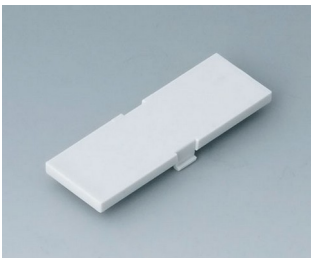


**B6804114**  
Terminal guards, with holes, 7.5  
& 7.62  
PC (UL 94 V-0)  
light grey



**B6804115**  
Terminal guards, with holes,  
10.16  
PC (UL 94 V-0)  
light grey

## Accessory



**B6800100**  
Front panel, 1 module  
PC (UL 94 V-0)  
light grey  
14x42mm



**B6800200**  
Front panel, 1 module  
PC  
transparent  
14x42mm



**B6801100**  
Front panel, 2 modules  
PC (UL 94 V-0)  
light grey  
32x42mm



**B6801200**  
Front panel, 2 modules  
PC  
transparent  
32x42mm



**B6802100**  
Front panel, 3 modules  
PC (UL 94 V-0)  
light grey  
49x42mm



**B6802200**  
Front panel, 3 modules  
PC  
transparent  
49x42mm



**B6803100**  
Front panel, 4 modules  
PC (UL 94 V-0)  
light grey  
67x42mm



**B6803200**  
Front panel, 4 modules  
PC  
transparent  
67x42mm

# RAILTEC C



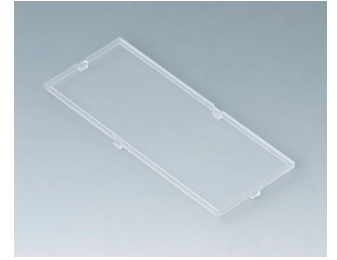
**B6804100**  
Front panel, 5 modules  
PC (UL 94 V-0)  
light grey  
84x42mm



**B6804200**  
Front panel, 5 modules  
PC  
transparent  
84x42mm



**B6805100**  
Front panel, 6 modules  
PC (UL 94 V-0)  
light grey  
102x42mm



**B6805200**  
Front panel, 6 modules  
PC  
transparent  
102x42mm



**B6806100**  
Front panel, 9 modules  
PC (UL 94 V-0)  
light grey  
155x42mm



**B6806200**  
Front panel, 9 modules  
PC  
transparent  
155x42mm



**B6807100**  
Front panel, 12 modules  
PC (UL 94 V-0)  
light grey  
207.5x42mm

Subject to technical modification without notice. © by OKW Gehäusesysteme, Buchen/Germany.