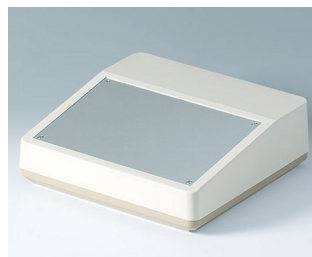
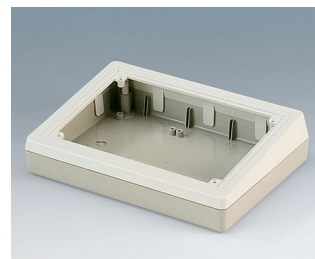


DESK CASES

Practical sloping front desktop enclosures

These plastic enclosures are suitable for indoor applications in many different fields of electronics. Choose a case that will fully meet your requirements in terms of size and inclination of the control panel.

- desk cases with inclined operating area
- suitable for numeric keypads and membrane keyboards
- useful range of five different models
- prepared for the assembly of eurocards 100 x 160 mm (types 138/190/190F/190H)
- front panel versions are available for the installation of complete prefabricated electronic assemblies
- connector mounting panel (types 220 & Combi F/H)
- version with attachment for digital readouts, measuring equipment, encoders etc. (Combi Desk Case H)
- protection class IP 40
- wall suspension element as accessory
- internal screw pillars for PCBs etc.



Customising Options

What do you still need for your own very personal product? We can supply enclosures and tuning knobs with all necessary modifications for fitting your electronic components.
Customising options for Desk Cases

DESK CASES



Machining



Lacquering



Printing



Laser marking



Decor foils



Special material



EMC shielding



Installation / Assembly
of accessories

Select Versions



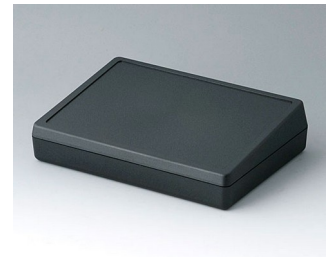
A0514007
DESK CASE 138
ABS (UL 94 HB)
off-white RAL 9002
138x190x54mm



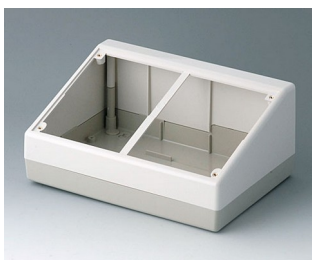
A0514009
DESK CASE 138
ABS (UL 94 HB)
black RAL 9005
138x190x54mm



A0519007
DESK CASE 190
ABS (UL 94 HB)
off-white RAL 9002
190x138x47mm



A0519009
DESK CASE 190
ABS (UL 94 HB)
black RAL 9005
190x138x47mm



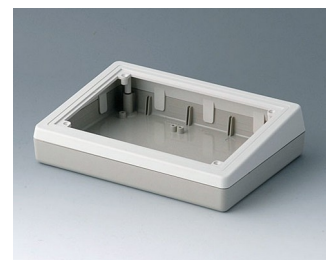
A9082065
DESK CASE 220
ABS (UL 94 HB)
off-white RAL 9002
220x156x100mm



A9084165
COMBI DESK CASE F
ABS (UL 94 HB)
off-white RAL 9002
228x216x76mm

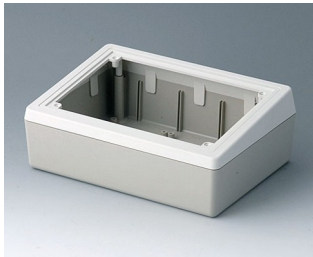


A9085165
COMBI DESK CASE H
ABS (UL 94 HB)
off-white RAL 9002
228x216x126mm



A9086265
DESK CASE 190 F
ABS (UL 94 HB)
pebble grey RAL 7032
190x138x47mm

DESK CASES



A9086365
DESK CASE 190 H
ABS (UL 94 HB)
off-white RAL 9002
190x138x70mm

Accessory to complete



A9180001
Front panel 220
Aluminium
matt anodised
205.5x129.4x1.5mm



A9184001
Front panel
Aluminium
matt anodised
200x130x1.5mm

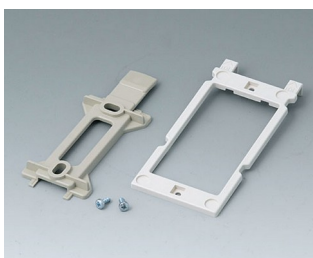


A9185001
Front panel
Aluminium
matt anodised
200x35x1.5mm



A9186001
Front panel 190 F/H
Aluminium
matt anodised
161.5x106x1.5mm

Accessory "wall/holder"



B1350048
Wall suspension elements
ABS (UL 94 HB)
pebble grey RAL 7032



B1360048
Wall suspension elements
ABS (UL 94 HB)
pebble grey RAL 7032

Accessory "screws"



A0306031
Self-tapping screws 3 x 6 mm
(PZ1)

DESK CASES

Accessory



A9210290
Anti-slide feet 9.5 x 3.8 mm
transparent

Subject to technical modification without notice. © by OKW Gehäusesysteme, Buchen/Germany.