

# STAR-KNOBS

## Modern illuminated tuning knobs

Our STAR-KNOBS are designed for menu driven interfaces, click rotation and click push-in for 'OK'. This reduces the number of knobs and controls required on the front panel. The illumination is a visual highlight and enhances user operation of the equipment.

- innovative design for flush fitting or surface mounting
- the flush-fitting version represents an attractive transition between the knob and the front of the device; the knob can be illuminated, that is, a ring lights up between the recess and the knob cover
- with the surface-mounted version, the knob design makes a great impression thanks to the slight inclination of the body towards the inner axis, thus allowing ergonomically comfortable operation; the knob is mounted on an approx. 3 mm high ring, which can be illuminated if required
- illumination possible with modern, energy-saving SMD LED technology for power supply units with 5 V: either white backlight for the colours diamond, emerald and sapphire or RGB backlight for individual colours as accessory
- knob with or without knurls
- cover with or without finger recess for fine adjustments
- tried and tested collet fixture system with secure fit on the axle
- max. torques: assembly = 1.5 Nm, function = 1.2 Nm

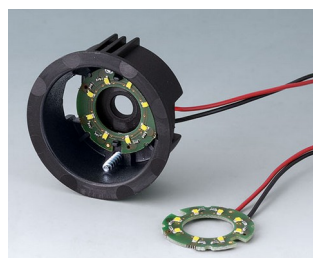
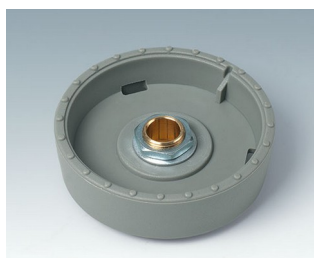
### knob sizes boreholes

ø 33 mm 6 mm, 1/4"

ø 41 mm 6 mm

### Minimum Components for 1 STAR-KNOB:

1 knob, 1 cover, 1 assembly kit



# STAR-KNOBS

## Applications and Examples

For rotary potentiometers or rotary pulse generators with round shaft ends in accordance with DIN 41591, including touch function

- Measuring and control technology
- Health Care
- Heating and air conditioning
- Communication devices
- Building management
- Smart Factory



Control element for pump control station



Control element for respiratory assistance apparatus



Control unit for photovoltaic solar installations



Heater for blood, blood substitutes and infusion solutions



Multiple analytical resonance system

## Customising Options

What do you still need for your own very personal product? We can supply enclosures and tuning knobs with all necessary modifications for fitting your electronic components. Customising options for Star-Knobs



Machining



Lacquering



Printing



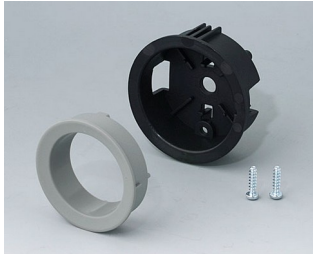
Laser marking



Installation / Assembly of accessories

# STAR-KNOBS

## Select Versions



**B8733118**  
Assembly kit 33, flush fitting  
version  
PA 6  
volcano



**B8733119**  
Assembly kit 33, flush fitting  
version  
PA 6  
nero



**B8733201**  
Assembly kit 33, surface-  
mounted version  
PC (UL 94 HB)  
diamond



**B8733206**  
Assembly kit 33, surface-  
mounted version  
PC (UL 94 HB)  
sapphire



**B8733218**  
Assembly kit 33, surface-  
mounted version  
PA 6  
volcano



**B8733219**  
Assembly kit 33, surface-  
mounted version  
PA 6  
nero



**B8741118**  
Assembly kit 41, flush fitting  
version  
PA 6  
volcano



**B8741119**  
Assembly kit 41, flush fitting  
version  
PA 6  
nero



**B8741201**  
Assembly kit 41, surface-  
mounted version  
PC (UL 94 HB)  
diamond



**B8741206**  
Assembly kit 41, surface-  
mounted version  
PC (UL 94 HB)  
sapphire



**B8741218**  
Assembly kit 41, surface-  
mounted version  
PA 6  
volcano



**B8741219**  
Assembly kit 41, surface-  
mounted version  
PA 6  
nero



# STAR-KNOBS

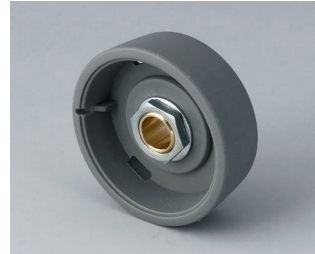
## System components to complete



**B8033068**  
STAR-KNOBS 33  
PA 6  
volcano  
33x14mm 6mm



**B8033069**  
STAR-KNOBS 33  
PA 6  
nero  
33x14mm 6mm



**B8033638**  
STAR-KNOBS 33  
PA 6  
volcano  
33x14mm 1/4"



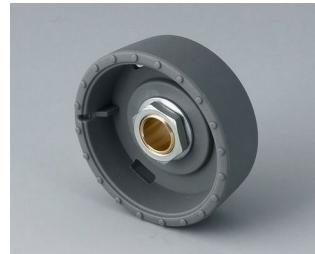
**B8033639**  
STAR-KNOBS 33  
PA 6  
nero  
33x14mm 1/4"



**B8041068**  
STAR-KNOBS 41  
PA 6  
volcano  
41x14mm 6mm



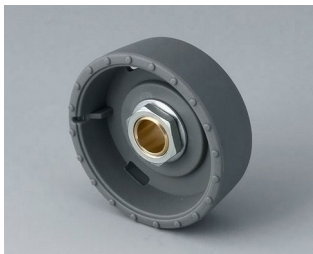
**B8041069**  
STAR-KNOBS 41  
PA 6  
nero  
41x14mm 6mm



**B8133068**  
STAR-KNOBS 33, with knurls  
PA 6  
volcano  
33x14mm 6mm



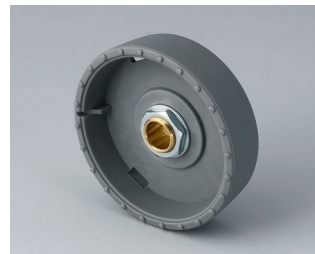
**B8133069**  
STAR-KNOBS 33, with knurls  
PA 6  
nero  
33x14mm 6mm



**B8133638**  
STAR-KNOBS 33, with knurls  
PA 6  
volcano  
33x14mm 1/4"



**B8133639**  
STAR-KNOBS 33, with knurls  
PA 6  
nero  
33x14mm 1/4"



**B8141068**  
STAR-KNOBS 41, with knurls  
PA 6  
volcano  
41x14mm 6mm



**B8141069**  
STAR-KNOBS 41, with knurls  
PA 6  
nero  
41x14mm 6mm



**B8233061**  
STAR-KNOBS 33  
PC (UL 94 HB)  
diamond  
33x14mm 6mm



**B8233065**  
STAR-KNOBS 33  
PC (UL 94 HB)  
emerald  
33x14mm 6mm



**B8233066**  
STAR-KNOBS 33  
PC (UL 94 HB)  
sapphire  
33x14mm 6mm



**B8233631**  
STAR-KNOBS 33  
PC (UL 94 HB)  
diamond  
33x14mm 1/4"

# STAR-KNOBS



**B8233635**  
STAR-KNOBS 33  
PC (UL 94 HB)  
emerald  
33x14mm 1/4"



**B8233636**  
STAR-KNOBS 33  
PC (UL 94 HB)  
sapphire  
33x14mm 1/4"



**B8241061**  
STAR-KNOBS 41  
PC (UL 94 HB)  
diamond  
41x14mm 6mm



**B8241065**  
STAR-KNOBS 41  
PC (UL 94 HB)  
emerald  
41x14mm 6mm



**B8241066**  
STAR-KNOBS 41  
PC (UL 94 HB)  
sapphire  
41x14mm 6mm



**B8333061**  
STAR-KNOBS 33, with knurls  
PC (UL 94 HB)  
diamond  
33x14mm 6mm



**B8333065**  
STAR-KNOBS 33, with knurls  
PC (UL 94 HB)  
emerald  
33x14mm 6mm



**B8333066**  
STAR-KNOBS 33, with knurls  
PC (UL 94 HB)  
sapphire  
33x14mm 6mm



**B8333631**  
STAR-KNOBS 33, with knurls  
PC (UL 94 HB)  
diamond  
33x14mm 1/4"



**B8333635**  
STAR-KNOBS 33, with knurls  
PC (UL 94 HB)  
emerald  
33x14mm 1/4"



**B8333636**  
STAR-KNOBS 33, with knurls  
PC (UL 94 HB)  
sapphire  
33x14mm 1/4"



**B8341061**  
STAR-KNOBS 41, with knurls  
PC (UL 94 HB)  
diamond  
41x14mm 6mm



**B8341065**  
STAR-KNOBS 41, with knurls  
PC (UL 94 HB)  
emerald  
41x14mm 6mm



**B8341066**  
STAR-KNOBS 41, with knurls  
PC (UL 94 HB)  
sapphire  
41x14mm 6mm



**B8633008**  
Cover 33  
PA 6  
volcano



**B8633009**  
Cover 33  
PA 6  
nero

# STAR-KNOBS



**B8633108**  
Cover 33, with finger recess  
PA 6  
volcano



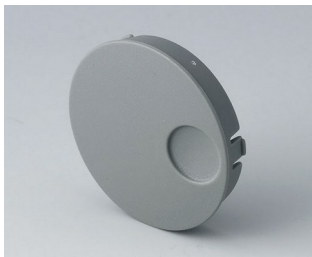
**B8633109**  
Cover 33, with finger recess  
PA 6  
nero



**B8641008**  
Cover 41  
PA 6  
volcano



**B8641009**  
Cover 41  
PA 6  
nero

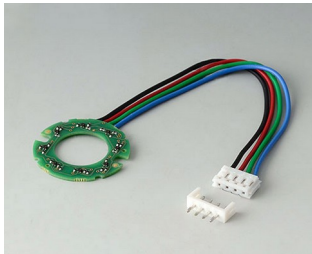


**B8641108**  
Cover 41, with finger recess  
PA 6  
volcano

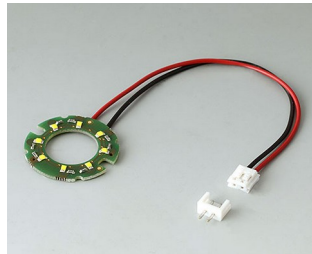


**B8641109**  
Cover 41, with finger recess  
PA 6  
nero

## Accessory "illumination"



**B7546001**  
LED illumination kit, 8 LEDs  
(RGB backlight)



**B8733004**  
LED illumination kit

## Accessory



**A6207009**  
Round nut M7 x 0.75



**A6210009**  
Round nut M10 x 0.75



**A6295009**  
Round nut 3/8"-32G



**A6300000**  
Spanner

# STAR-KNOBS



**B8733001**  
Assembly support 33  
ABS (UL 94 HB)  
green



**B8741001**  
Assembly support 41  
ABS (UL 94 HB)  
green

Subject to technical modification without notice. © by OKW Gehäusesysteme, Buchen/Germany.