

NEW

www.okw.co.uk



NEW PRODUCTS

ENCLOSURES,
TUNING KNOBS
AND SERVICES

OKW
GEHÄUSE
SYSTEME

NEW



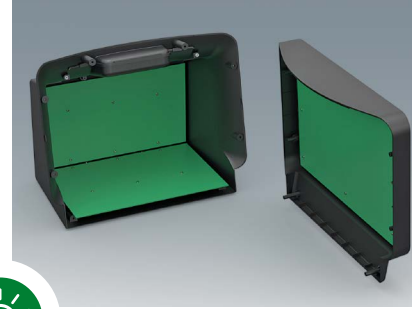
COMMUNITEC

Modern, large-format table top enclosures for comfortable interaction and visualisation

The COMMUNITEC enclosure range is ideal for housing large-format electronic assemblies presented in an elegant, modern and design-oriented enclosure. A key feature is the recessed handle discreetly integrated behind the operating panel, enabling comfortable transport and greater flexibility in use.

PRODUCT ADVANTAGES

- Modern and functional design.
- Integrated handle and carrying function for efficient handling.
- Available in two sizes, with multiple colour combinations possible.
- Operating panel with a recessed area to protect membrane keypads or large-format 11.5" - 14" (29 - 35 cm) displays, as well as a flat surface for front mounted operating elements and connectors.
- Large side areas for connectors, ventilation slots for increased heat dissipation or the integration of measuring instruments.
- The Rear of enclosure features a recessed area to protect built-in sockets, plugs and supply cables and includes an additional recess for a product label.
- Four-part design: basic housing, operating panel, handle recess panel and bottom panel – available as separate components for individual colour combinations.



MATERIAL / COLOUR

- ASA+PC-FR (UL 94 V-0), anthracite grey (RAL 7016)
 - ASA+PC-FR (UL 94 V-0), traffic white (RAL 9016)
- As a colour-contrast option, the handle recess panel is also available in:
- ASA+PC-FR (UL 94 V-0), traffic grey A (RAL 7042)

OUTSIDE DIMENSIONS IN MM (W x H x D)

- COMMUNITEC S
283 x 246 x 194 mm
- COMMUNITEC M
344 x 274 x 219 mm

PROTECTION CLASS IP40

CUSTOMISING OPTIONS

- Machining
- Printing
- Laser marking
- Decor foils
- Special material
- Assembly of accessories
- EMC shielding



PRODUCT ADVANTAGES

- High degree of configuration flexibility: fastening pillars for PCBs and components in the basic housing, in the operating panel and on the bottom panel.
- Easy assembly/installation: efficient assembly of the bottom panel outside the housing. The bottom panel, together with the electronic unit, can then be mounted into the COMMUNITEC basic housing.
- Particularly easy installation and servicing thanks to good access to pre-assembled components – from above through the opening for the handle recess panel and/or from the front.
- Includes self-adhesive, non-slip feet for reliable positioning.

handle recess panel

operating panel

bottom panel

basic housing

APPLICATION FIELDS

Medical equipment, e.g. for patient monitoring, diagnosis and surveillance, for example, for ventilators, neuromonitoring and much more. Aesthetic medicine, e.g. laser treatment, foot care and IPL (Intense Pulsed Light) applications. Versatile measuring and testing devices in laboratories, testing technology, automation, etc. For fault analysis and quality control. Oscilloscopes with a wide range of functions.

NEW



MATERIAL / COLOUR

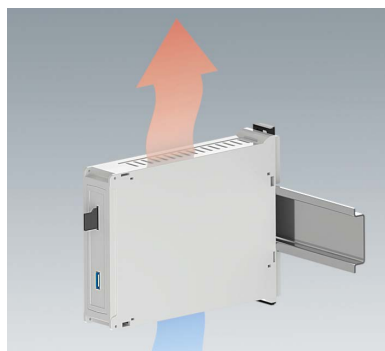
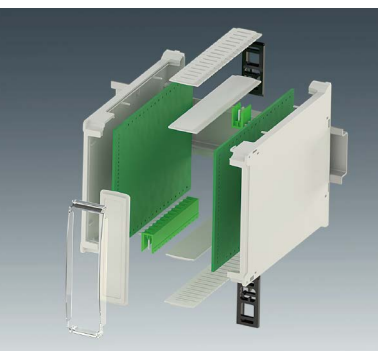
- PC (UL 94 V-0), light grey (RAL 7035)

OUTSIDE DIMENSIONS IN MM (W x H x D)

95 x 23 x 113 mm

CUSTOMISING OPTIONS

- Machining
- Printing
- Laser marking
- Decor foils
- Assembly of accessories



RAILTEC BP22


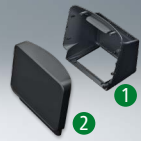

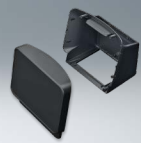

Range of DIN rail enclosures expanded with a new panel version

The RAILTEC BP M22 is a versatile electronics enclosure designed for simple and quick mounting on EN 60715 TH35 DIN rails. It is ideally suited for measuring/control devices and is dimensioned according to industry standard sizes.

PRODUCT ADVANTAGES


- The RAILTEC BP M22 is available in three different side panel configurations: closed, with ventilation slots on one side, and with ventilation slots on both sides for increased heat dissipation.
- The panel version provides simple and flexible installation of the electronics as well as efficient, screwless case assembly.
- For plug headers max. 2 x 16-pin, 5.08, fixed or pluggable. Simple and quick assembly by locking onto DIN rails EN 60715 TH35.
- An optional transparent hinged cover (accessory) is also available. This protects the front panel and the integrated control/display elements, interfaces, etc., while ensuring a clear view. The hinged cover can be swivelled up or down.

COMMUNITEC




Article	Outside dim. in mm			Complete enclosure	
	W	H	D		
 S	283	246	194	To complete the set, each requires a basic housing, an operating panel, a handle recess panel and a bottom panel plate is required. Different colour versions can be created on request. The handle recess panel and bottom panel are designed for use with both enclosure sizes.	
Article	Individual components		Material	Colour	Part-No.
	Basic housing	①	ASA+PC-FR (UL 94 V-0)	traffic white (RAL 9016)	C 36 02 707
	Basic housing			anthracite grey (RAL 7016)	C 36 02 708
	Operating panel	②	traffic white (RAL 9016)	C 36 02 407	
	Operating panel		anthracite grey (RAL 7016)	C 36 02 408	
Article	Outside dim. in mm			Complete enclosure	
W	H	D			
 M	344	274	219	To complete the set, each requires a basic housing, an operating panel, a handle recess panel and a bottom panel plate is required. Different colour versions can be created on request. The handle recess panel and bottom panel are designed for use with both enclosure sizes.	
Article	Individual components		Material	Colour	Part-No.
	Basic housing		ASA+PC-FR (UL 94 V-0)	traffic white (RAL 9016)	C 36 04 707
	Basic housing			anthracite grey (RAL 7016)	C 36 04 708
	Operating panel		traffic white (RAL 9016)	C 36 04 407	
	Operating panel		anthracite grey (RAL 7016)	C 36 04 408	
Article	Individual components		Material	Colour	Part-No.
	suitable for both sizes	Bottom panel	ASA+PC-FR (UL 94 V-0)	traffic white (RAL 9016)	C 36 02 807
		Bottom panel		anthracite grey (RAL 7016)	C 36 02 808
		Handle recess panel	④	traffic white (RAL 9016)	C 36 02 607
		Handle recess panel		anthracite grey (RAL 7016)	C 36 02 608
		Handle recess panel		traffic grey A (RAL 7042)	C 36 02 601

RAILTEC BP22

Information on page 4

RAILTEC BP22							
Article	Outside dim. in mm			Version	Material / Colour	Part-No.	
	W	H	D				
	M22	95	23	113	2 closed side panels	PC (UL 94 V-0), light grey (RAL 7035)	B 65 22 101
					1 side panel closed, 1 side panel with ventilation slots		B 65 22 102
					2 side panels with ventilation slots		B 65 22 103

ACCESSORIES RAILTEC BP22

Article	Version / Usage		Material / Colour	Part-No.
	Hinged cover	Hinged convex cover for RAILTEC BP, M22. Can be swivelled up or down. Protects electronics, interfaces and/or operating elements.	transparent	B 66 22 101
	Front panel	① Front panel for RAILTEC BP, M22 as an accessory for replacement purposes.	PC (UL 94 V-0), light grey (RAL 7035)	B 65 22 801
	Side panel closed	② Side panel closed for RAILTEC BP, M22 as an accessory for replacement purposes.		B 65 22 811
	Side panel with ventilation slots	③ Side panel with ventilation slots for RAILTEC BP, M22 as an accessory for replacement purposes.	PC (UL 94 V-0), light grey (RAL 7035)	B 65 22 821

THE COMPLETE PRODUCT RANGE



BODY-CASE



MINITEC



STYLE-CASE



SMART-CASE



DATEC-CONTROL



HAND-TERMINAL



SENSO-CASE



CARRYTEC



INTERFACE-TERMINAL



SMART-CONTROL



NET-BOX



DIATEC



ROBUST-BOX



IN-BOX



SNAPTEC



PROTEC



SMART-TERMINAL



EVOTEC



SHELL-TYPE CASES



TOPTec



MOTEC



RAILTEC B/C



TOP-KNOBS



TUNING KNOBS 'CLASSIC'



SOFT-CASE



DATEC-POCKET-BOX



DATEC-MOBIL-BX



DATEC-COMPACT



ERGO-CASE



SLIM-CASE



CONNECT



SMART-PANEL



MINI-DATA-BOX



EASYTEC



SOLID-BOX



SMART-BOX



COMTEC



DESK CASES



DATEC-TERMINAL



UNITEC



SYNERGY



FLAT-PACK CASE



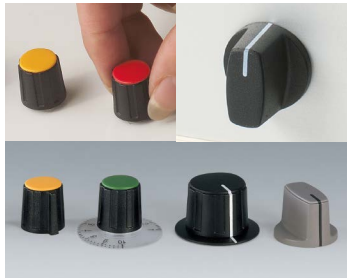
ART-CASE



COMMUNITEC



COM-KNOBS



COMBINATION KNOBS



STAR-KNOBS



CONTROL-KNOBS



Modification services

Customised enclosures modified to your exact requirements

We can process and modify our enclosures and tuning knobs according to your needs. From conception to development, through to full series production, we can offer you the solution you need, in the quantities you require.

LACQUERING

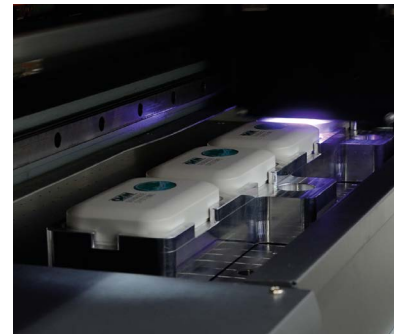
To ensure that the plastic enclosures align with the product application or the company's corporate identity, they can be painted in any customer-specified colour. For special requirements, such as enhancing the tactile feel of the product or creating metallic effects, OKW also offers a selection of specialised coatings.

PRINTING

The enclosures can be individually printed or labelled. This allows the logo to be perfectly showcased or important functions of the end devices to be highlighted.

DECOR FOILS

For lettering and colour design, we can digitally print decor foils quickly and easily for small batches starting with 1 unit. The digital printing process allows different versions without a great deal of trouble, e.g. in design, with consecutive numbering, codes and technical specifications. Colour gradations are also possible.



LASER MARKING

Laser marking is ideal for permanent and abrasion-resistant labelling and marking. In particular, very small machine-readable markings, e.g. QR codes, barcodes, consecutive numbering of individual parts and texts can be easily realised.

MACHINING

OKW's in-house service centre offers various mechanical processing options, such as milling, drilling, punching and countersinking.

INSTALLATION / ASSEMBLY OF ACCESSORIES

Assembly and gluing of housing accessories, assembly of components, individual fitting with mounting domes, light guides and much more are also available as services.

SPECIAL MATERIAL

SPECIAL MATERIAL "INDIVIDUAL COLOURS"

On request, we can also produce many of our enclosures and tuning knobs in special colours. Individual colour adjustments are possible according to a sample, range of dyes, RAL or Pantone.

SPECIAL MATERIAL "V-0"

Manufacturing of enclosures in flame-resistant plastic material on request.

EMC SHIELDING

To protect the electronics from external interference and their own interference emissions, the inside of the enclosure can be coated with aluminium.





OKW Enclosures Ltd.

15 Brunel Way • Segensworth East
Fareham, PO15 5TX • United Kingdom
Tel. (01489) 583858
EMail sales@okw.co.uk
Web www.okw.co.uk



Request a sample!

It's quick and easy to do online – simply add the desired enclosure/knob design to your 'shopping cart' on the OKW website and check the 'Sample' box. Then fill in your contact details and submit the form. You will receive a copy of your request by email and your sample request will be processed immediately.

Stay up to date!
Follow us across our social media channels



Turtle © by OKW Gehäusesysteme, D-74722 Buchen.
Errors and misprints do not justify any claims for damages.
March 2026.