



www.okw.com



SMART-TERMINAL

THE NEW SOPHISTICATED ALUMINIUM PROFILE
ENCLOSURE FOR CENTRAL CONTROL UNITS



2



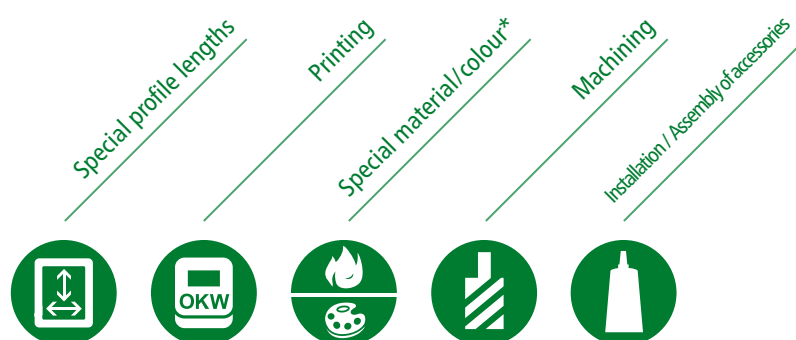
Materials and colours:

- Aluminium profile
AlMgSi 0,5 matt anodised
- Plastic parts
ASA+PC-FR, UV resistant, colour lava
- Designer seals
TPV material, colours green or volcano grey

SMART-TERMINAL



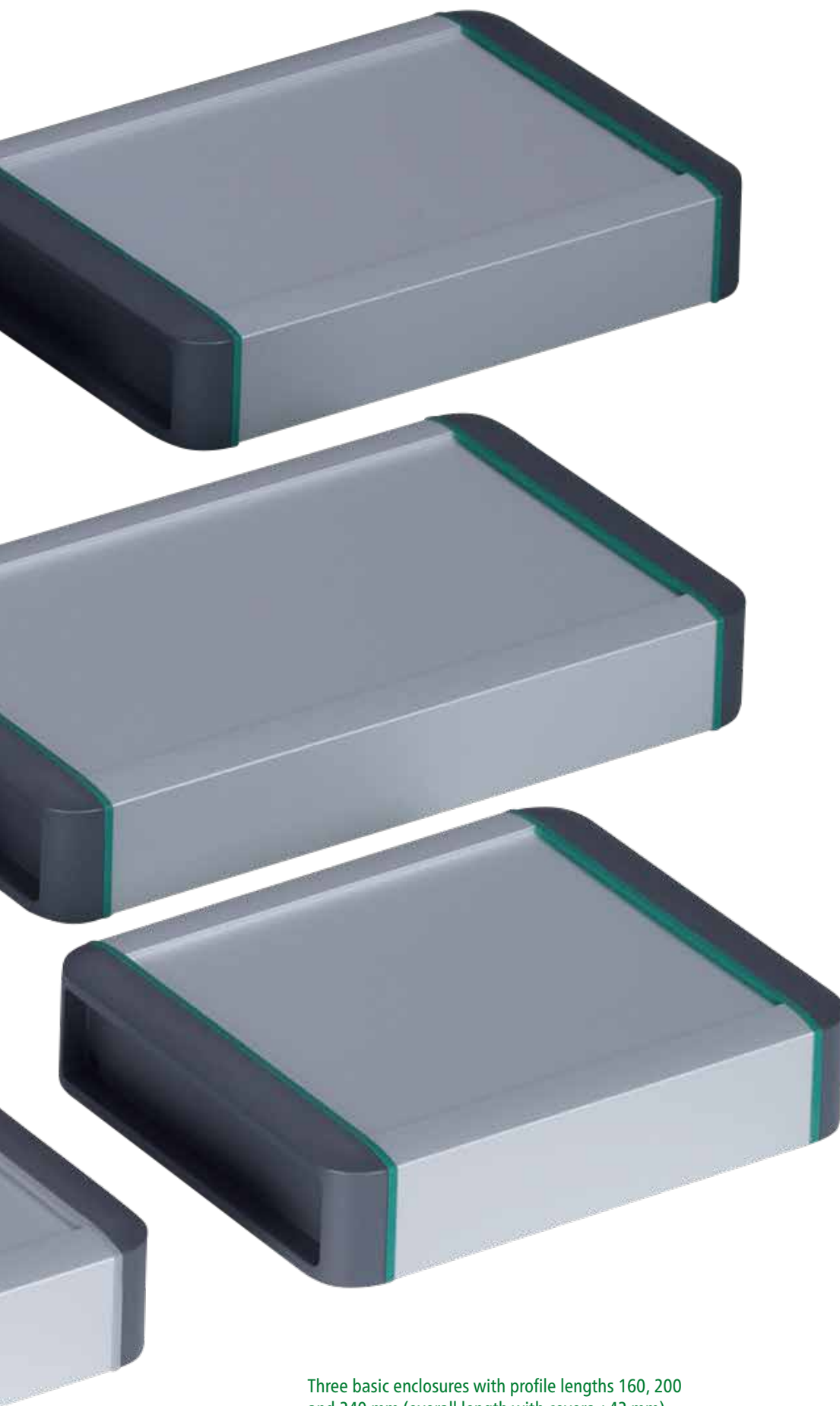
Our new SMART-TERMINAL aluminium profile enclosures feature a highly quality matt anodised finish. These robust, elegant and highly attractive cases offer plenty of space for large-volume electronic assemblies, for example touch screens, display modules, PCBs etc. A variety of technical advantages, individual profile lengths on request, and creative designer options make the SMART-TERMINAL the last word in excellence for tough industrial display enclosures.



The new SMART-TERMINAL can be modified or finished individually to meet your requirements. Why not ask us! We are happy to assist you at any time.

*Designer seals and side covers





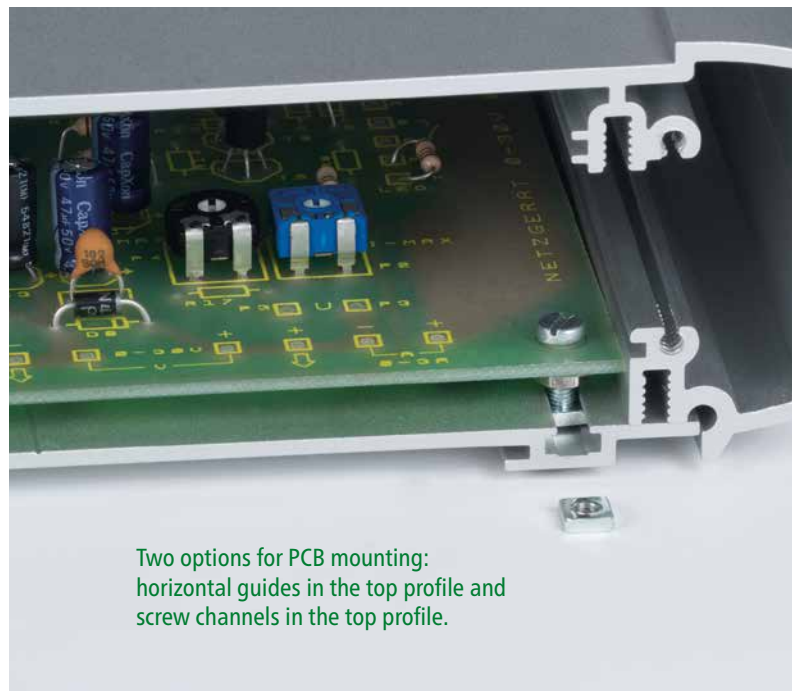
Three basic enclosures with profile lengths 160, 200 and 240 mm (overall length with covers +42 mm), enclosure width 170 mm. Designer seals available in green or volcano grey. Individual profile lengths to customer specifications on demand.



Designer seals moulded in TPV material in volcano grey or green. Provide a visual highlight for these new table-top, sloping front and wall mount enclosures.



Covers in lava (similar to anthracite) moulded in high-quality ASA+PC-FR plastic.



Two options for PCB mounting: horizontal guides in the top profile and screw channels in the top profile.



Flat areas for easy installation of the interfaces . Recessed areas in the side covers protect the cables and connectors.

The SMART-TERMINAL as an embedded PC. With individual profile lengths, the sides can also be closed with matching aluminium panels (accessories).



Applications:

- Peripheral and interface equipment
- Office
- Communications technology
- Safety engineering
- Biometrics
- Medical and laboratory technology
- Wellness
- Health Care
- Automation
- Measurement and control engineering



The top part has a recessed area to protect membrane keypads or product labels. There is sufficient space here for operating elements, switches or displays.



Included in the range of accessories: system for concealed wall mounting as well as an enclosure canting kit – in landscape format – to allow an ergonomically favourable reading angle of 12 degrees.



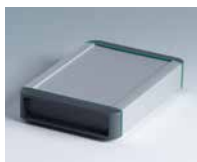
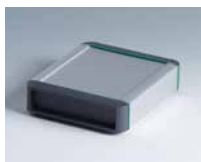
The SMART-TERMINAL is a robust, sealed enclosure. The round-cord seal required for this is included with the basic enclosure.



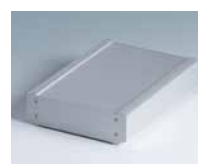
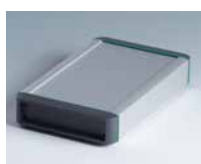
On request, the seals and covers can be produced in other colours to create an individual design (200 units or more).

ORDERING INFORMATION FOR BASIC ENCLOSURE

COMPLETE VERSIONS



Version	160 lava/green	160 lava/volcano	200 lava/green	200 lava/volcano
Length (mm)	202	202	242	242
Width (mm)	170	170	170	170
Height (mm)	50	50	50	50
Supply (1 pc)	① Top profile	Top profile	Top profile	Top profile
	② Base profile	Base profile	Base profile	Base profile
	③ Assembly kit	Assembly kit	Assembly kit	Assembly kit
	④ Set of side covers	Set of side covers	Set of side covers	Set of side covers
	⑤ Set of designer seals	Set of designer seals	Set of designer seals	Set of designer seals
Part-No.	B 34 07 011	B 34 07 012	B 34 07 021	B 34 07 022



Version	240 lava/green	240 lava/volcano	160 Aluminium	200 Aluminium	240 Aluminium
Length (mm)	282	282	164	204	244
Width (mm)	170	170	170	170	170
Height (mm)	50	50	50	50	50
Supply (1 pc)	① Top profile	Top profile	Top profile	Top profile	Top profile
	② Base profile	Base profile	Base profile	Base profile	Base profile
	③ Assembly kit	Assembly kit	Assembly kit	Assembly kit	Assembly kit
	④ Set of side covers	Set of side covers	Side covers	Side covers	Side covers
	⑤ Set of designer seals	Set of designer seals			
Part-No.	B 34 07 031	B 34 07 032	B 34 07 013	B 34 07 023	B 34 07 033

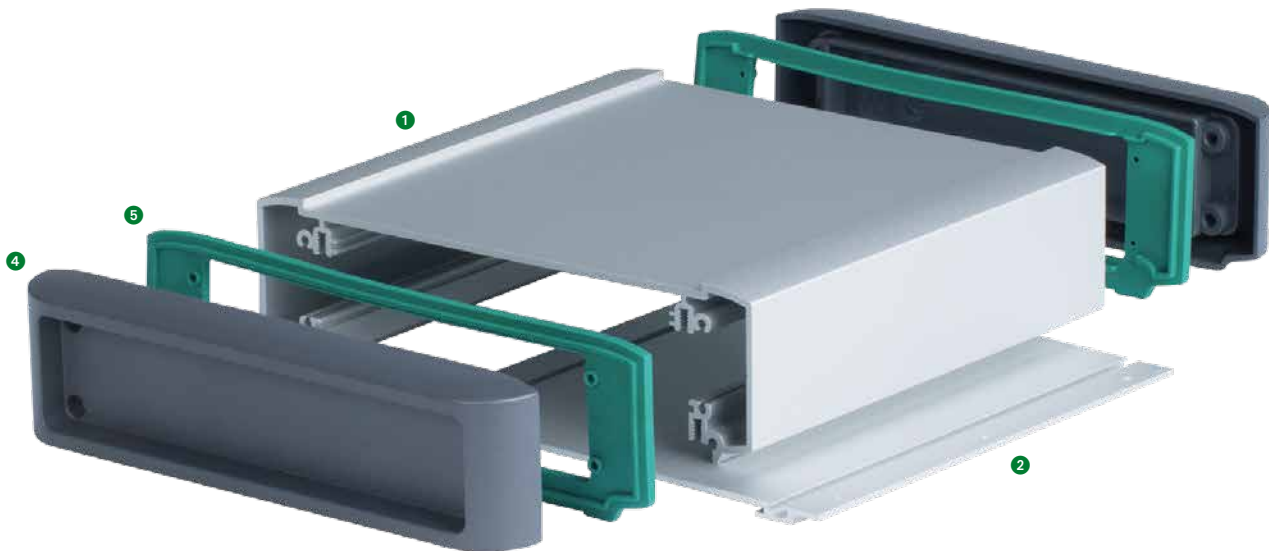
SMART-TERMINAL ACCESSORY




Article	Wall suspension element	Case canting kit	Set of M3 square-head nuts	Torx T10 screwdriver
Version/ Material and colour	For secure and flush wall mounting of the enclosure. Aluminium AlMgSi 0,5 matt anodised	Cants the enclosure by 12° to provide an ergonomic angle for reading displays. Incl. 4x rubber feet in black. ASA+PC-FR, lava	4x M3 square-head nuts. For mounting PCBs using M3 screws in the T-groove in the base profile.	Torx 10, with ergonomic handle, for assembling the enclosures.
Application	Suitable for all types of SMART-TERMINAL	Suitable for all types of SMART-TERMINAL	Suitable for all types of SMART-TERMINAL	Suitable for all types of SMART-TERMINAL
Part-No.	B 35 07 020	B 35 07 030	B 35 00 001	A 03 99 T10

INDIVIDUAL PARTS FOR INDIVIDUAL ENCLOSURE DESIGN

It is possible to order your SMART-TERMINAL in a special length to suit your PCBs and electronics. Simply provide us with the profile length you require, and select the appropriate enclosure parts from the system components listed below. We will then supply your complete custom size enclosures.



			
Version	③ Set of side covers	④ Set of designer seals	④ Set of designer seals
Application	For closing the profile sides. Requires a set of designer seals.	For use with the covers	For use with the covers
Material, colour and quantity	TPV material, lava, 2 pcs ●	TPV material, green, 2 pcs ●	TPV material, volcano, 2 pcs ●
Part-No.	B 35 07 011	B 35 07 016	B 35 07 017
			
Version	⑥ Side cover	⑦ Rubber feet	
Application	As an alternative to the cover set. For closing the profile sides. Requires a set of designer seals. ●	Rubber feet with self-adhesive foil facilitate a secure position.	
Material, colour and quantity	Aluminium matt anodised, 1 pc	black, 2 rubber feet	
Part-No.	B 35 07 025	A 92 09 229	

www.okw.com

Manufacturer

Odenwälder Kunststoffwerke
Gehäusesysteme GmbH
Friedrich-List-Str. 3
D-74722 Buchen

Tel. +49 (0) 62 81 / 4 04-00
Fax +49 (0) 62 81 / 4 04-144
EMail Info@okw.com
Web www.okw.com

Turtle © by OKW Gehäusesysteme, Buchen. This leaflet will be valid until the new catalog is issued, latest 31.12.2018. Subject to technical modification without notice. Typographical and other errors do not justify any claim for damages. DPSMT18en. 02.2018en.